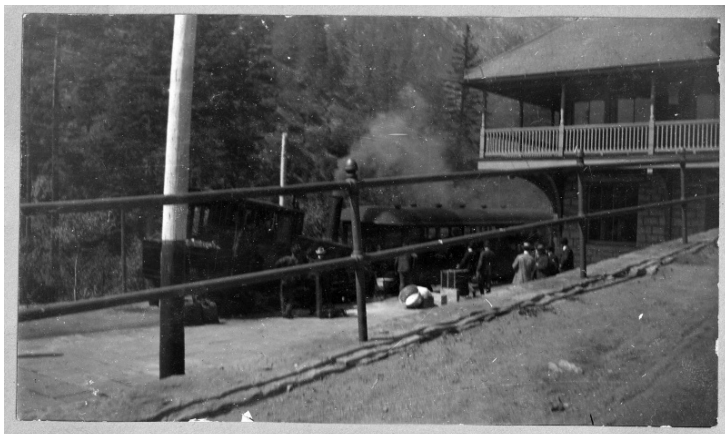


# Train Station



## Description

Unidentified train station, possibly the cog train that takes visitors up to Pike's Peak in Manitou Springs, Colorado. All people are unidentified. From: Truman home, an album of Wallace family, friends, and vacations.

## Date(s)

ca.  
1903

**Accession Number** 82-59-26

2.5x4.25 inches    Black & White

**Keywords** Railroad stations    Railroads

**Rights** The Library is unaware of any copyright claims to this item; use at your own risk.

**Note: If you use this image, rights assessment and attribution are your responsibility.**

Harry S. Truman Library & Museum.

Attention media: Please make note of this item's accession number. Print out this page and retain it for your permissions records before downloading this image file for possible publication. Library staff cannot sign permissions forms or provide additional paperwork. The Library charges no usage fees for downloaded images.