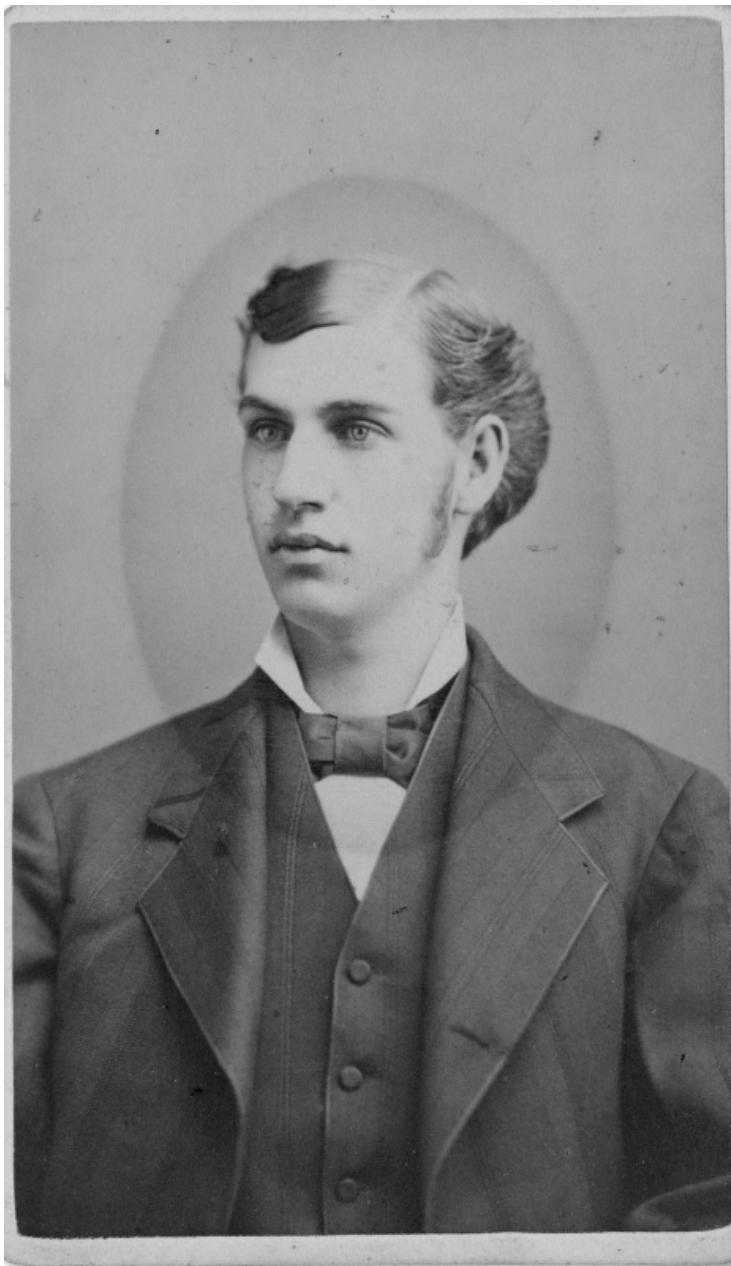


Portrait of David W. Wallace



Description

Portrait of David Willock Wallace. David W. Wallace was the father of Bess Wallace Truman. From: Truman home. This photo was originally in one frame with photos 82-62-01 through 82-62-05.

Date(s)

1878

Accession Number 82-62-05

4.2x2.5 inches Black & White

Keywords Men Portraits

HST Keywords Truman - Relatives - Wallace Family - Wallace, D.W.

People Pictured Wallace, David Willock, 1860-1903

Rights Public Domain - This item is in the public domain and can be used freely without further permission.

Note: If you use this image, rights assessment and attribution are your responsibility.

Credit: Williams & Thomson Photographers, Kansas City (Mo.) Harry S. Truman Library & Museum.

Attention media: Please make note of this item's accession number. Print out this page and retain it for your permissions records before downloading this image file for possible publication. Library staff cannot sign permissions forms or provide additional paperwork. The Library charges no usage fees for downloaded images.