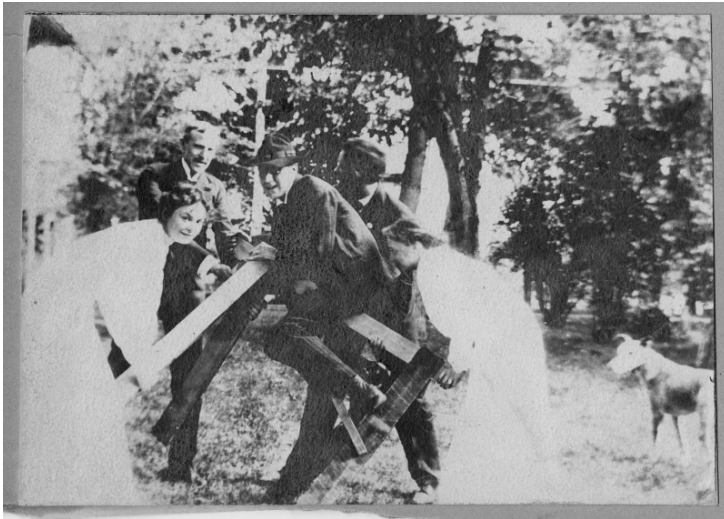


Bess Wallace and Others in Tableau at the Wallace Home



Description

A group of two young men and two young women pose for a photograph as part of a tableau or play. In the center, Frank Wallace is riding a wooden frame "horse" as the others tip the "horse" back. Bess Wallace is at the right; all others are unidentified. A dog is standing off to the right. They are in the yard of the Wallace home at 219 North Delaware Street, Independence, Missouri. This is possibly related to the "St. Agnes Guild," a group of friends of Bess Wallace who presented an outdoor play for children (see "Remembering Delaware Street" by Elizabeth Paxton Forsley). From: Truman home, an album of Wallace family, friends, and vacations.

Date(s)

ca.

1900

Accession Number

82-59-110

2.25x3.1 inches Black & White

Keywords Men Presidential family Women Drama

HST Keywords Truman, Bess - Childhood - Youth; Truman - Homes - Independence; Truman - Relatives - Wallace Family - Wallace, Frank

People Pictured Truman, Bess Wallace, 1885-1982 Wallace, Frank Gates, 1887-1960

Rights Public Domain - This item is in the public domain and can be used freely without further permission.

Note: If you use this image, rights assessment and attribution are your responsibility.

Harry S. Truman Library & Museum.

Attention media: Please make note of this item's accession number. Print out this page and retain it for your permissions records before downloading this image file for possible publication. Library staff cannot sign permissions forms or provide additional paperwork. The Library charges no usage fees for downloaded images.