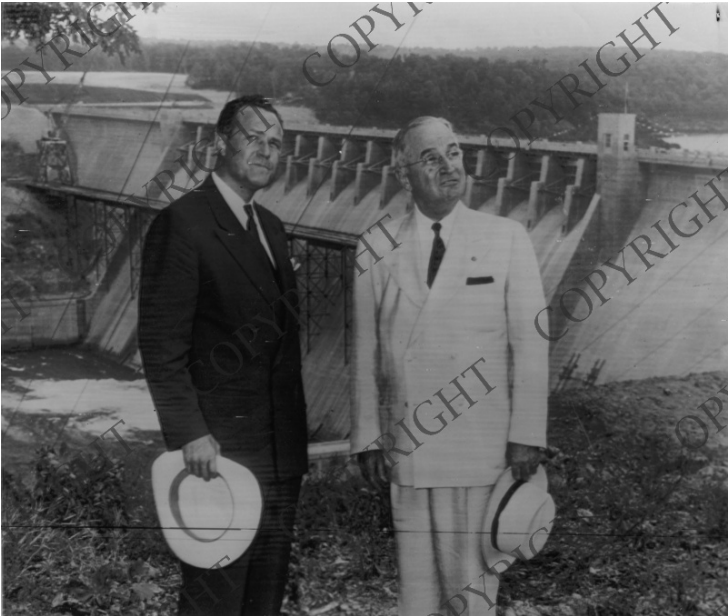


President Truman and Arkansas Governor Sid McMath at Bull Shoals Dam



Description

President Harry S. Truman (right) and Arkansas Governor Sid McMath stand overlooking the new Bull Shoals Dam. President Truman dedicated the dam and also the other new dam in the area, the Norfolk Dam. The President arrived by train from Little Rock this morning. Same as 68-1536, only slightly better print. From: Houston Post.

Date(s)

July 2, 1952

Accession Number
93-01

8x10 inches (21x26 cm) Black & White

Keywords Dams Dedications (Monuments, etc.) Governors Presidents

HST Keywords Arkansas - Bull Shoals and Norfolk Dams; Truman - Addresses - Dedications - Bull Shoals and Norfolk Dams; Truman - Ceremonies - Dedications - Bull Shoals and Norfolk Dams

People Pictured McMath, Sid Truman, Harry S., 1884-1972

Rights Copyrighted - This item is copyrighted and cannot be published, reproduced, or otherwise used without the explicit permission of the copyright holder.

Note: If you use this image, rights assessment and attribution are your responsibility.

Credit: Associated Press Harry S. Truman Library & Museum.

Attention media: Please make note of this item's accession number. Print out this page and retain it for your permissions records before downloading this image file for possible publication. Library staff cannot sign permissions forms or provide additional paperwork. The Library charges no usage fees for downloaded images.