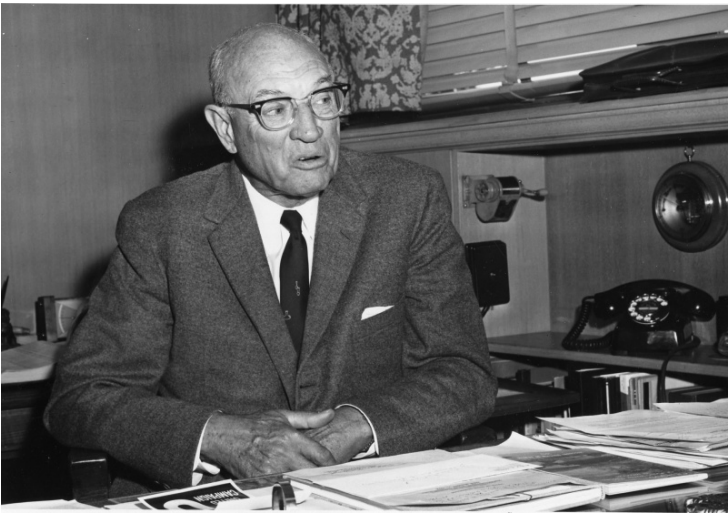


Thomas Veatch in His Office



Description

Thomas Veatch in his office in Kansas City, Missouri. Mr. Veatch was an engineer and friend of Harry S. Truman and worked with Truman to build the Jackson County road system during Truman's service as Presiding Judge of Jackson County.

Date(s)

December 1962

Accession Number 63-980-04

5x7 inches (13x18 cm) Black & White

Keywords Engineers Portraits

People Pictured Veatch, N. T. (Nathan Thomas), 1886-1975

Rights Public Domain - This item is in the public domain and can be used freely without further permission.

Note: If you use this image, rights assessment and attribution are your responsibility.

Credit: Harry S. Truman Library Harry S. Truman Library & Museum.

Attention media: Please make note of this item's accession number. Print out this page and retain it for your permissions records before downloading this image file for possible publication. Library staff cannot sign permissions forms or provide additional paperwork. The Library charges no usage fees for downloaded images.