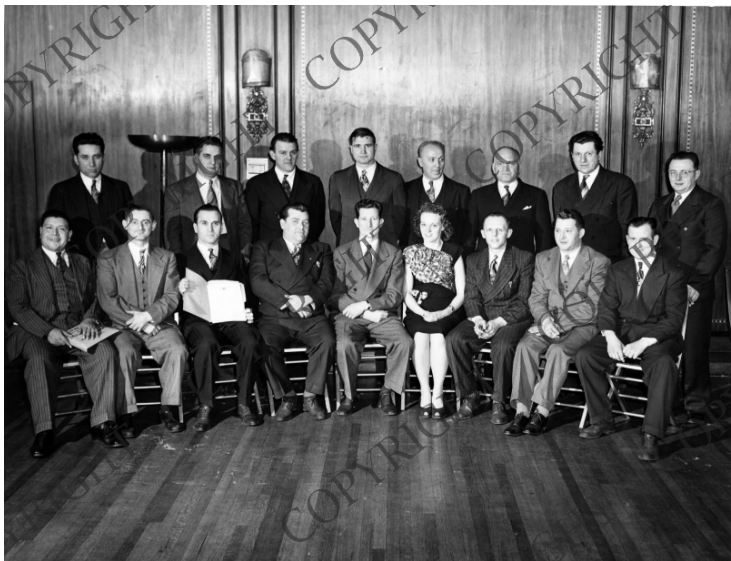


John W. Gibson and Crane Local #2048



Description

Assistant Secretary of Labor John W. Gibson (fifth from left) with unidentified members of Crane Local #2048.

Date(s)

ca.

1946

Accession Number

63-833

8x10 inches (21x26 cm) Black & White

Related Collection [Gibson, John W. Papers](#)

Keywords Cabinet officers Labor unions

People Pictured Gibson, John W. (John Willard), 1910-1976

Rights Copyrighted - This item is copyrighted and cannot be published, reproduced, or otherwise used without the explicit permission of the copyright holder.

Note: If you use this image, rights assessment and attribution are your responsibility.

Credit: Ernest J. Graf Harry S. Truman Library & Museum.

Attention media: Please make note of this item's accession number. Print out this page and retain it for your permissions records before downloading this image file for possible publication. Library staff cannot sign permissions forms or provide additional paperwork. The Library charges no usage fees for downloaded images.