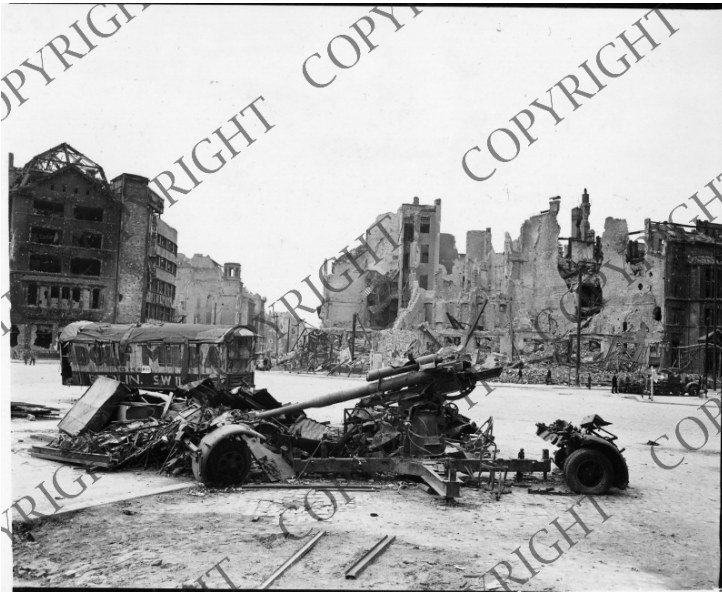


Allied Forces in Berlin: Potsdamer Platz



Description

A view taken on the Potsdamer Platz in Berlin, Germany, with a wrecked 88 millimeter artillery piece in the foreground. There was a great deal of damage done to this part of Berlin, due to bombing and the fighting with the Russians into the heart of the city.

Date(s)

1945

Accession Number 63-407

4x6 inches (10x15 cm) Black & White

Related Collection [Redding, John M. Papers](#)

Keywords Artillery World War, 1939-1945 War damage

Rights Copyrighted - This item is copyrighted and cannot be published, reproduced, or otherwise used without the explicit permission of the copyright holder.

Note: If you use this image, rights assessment and attribution are your responsibility.

Credit: Haacker British Combine Harry S. Truman Library & Museum.

Attention media: Please make note of this item's accession number. Print out this page and retain it for your permissions records before downloading this image file for possible publication. Library staff cannot sign permissions forms or provide additional paperwork. The Library charges no usage fees for downloaded images.