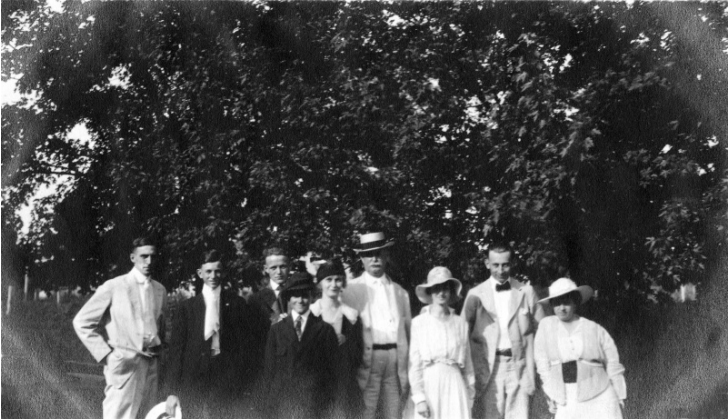


Wallace-Wells Family Gathering



Description

Bess Wallace with a group of her relatives from Platte City, Missouri. From left to right: George Wallace, Gates Wells, unidentified, W.S. Wells, Louise Wells, William Strother Wells, Helen Wallace, John Wallace, Bess Wallace. From: Truman home, an album entitled "Postal Souvenirs."

Date(s)

ca.
1905

Accession Number 82-58-53

3.75x6 inches Black & White

Keywords Portraits, Group Presidential family

HST Keywords Truman - Bess - Family - Relatives

People Pictured Truman, Bess Wallace, 1885-1982 Wallace, George Porterfield, 1892-1963 Wallace, Helen, 1896-1971 Wallace, John Wells, W. Gates, 1898-1964 Wells, Louise Wells, W. S. Wells, William Strother, d. 1924

Rights Public Domain - This item is in the public domain and can be used freely without further permission.

Note: If you use this image, rights assessment and attribution are your responsibility.

Harry S. Truman Library & Museum.

Attention media: Please make note of this item's accession number. Print out this page and retain it for your permissions records before downloading this image file for possible publication. Library staff cannot sign permissions forms or provide additional paperwork. The Library charges no usage fees for downloaded images.