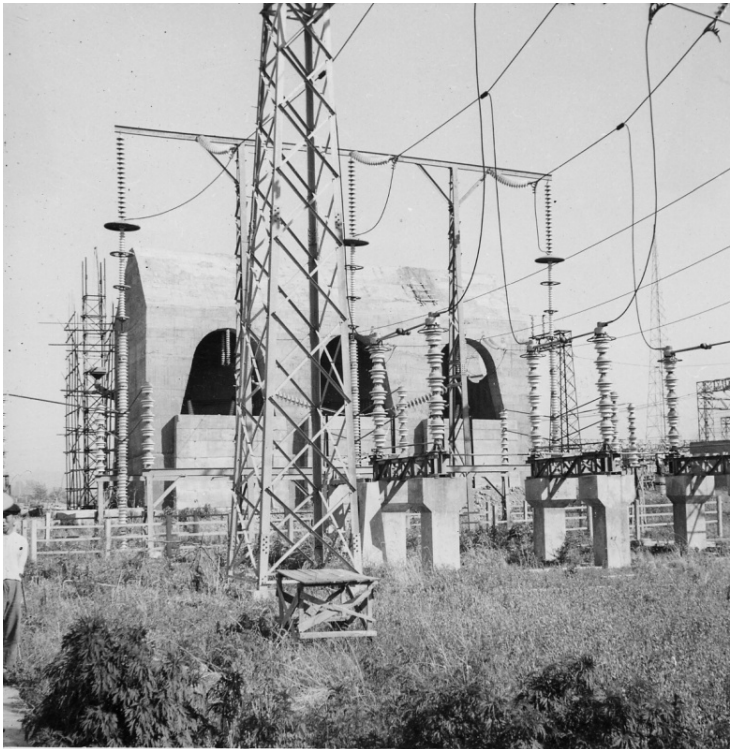


Anshan Steel Works in Manchuria



Description

Anshan Steel Works in Manchuria, one of the largest sub-stations in Asia. No removals were made here by Soviets during occupation. Twenty-foot thick concrete protection walls can be seen around three 50,000 KVA transformers. Photograph taken during the U.S. Reparations Mission. Edwin Pauley was the U.S. Ambassador on the Allied Reparations Committee from 1945-47 (the committee that assessed the reparations the Axis powers could afford to pay the victors).

Date(s)

ca.
June 1946

Accession Number 2009-640

4x4 inches Black & White

Related Collection [Pauley, Edwin W. Papers](#)

Keywords Factories Electric power-plants Reparations

HST Keywords China - Manchuria

Rights The Library is unaware of any copyright claims to this item; use at your own risk.

Note: If you use this image, rights assessment and attribution are your responsibility.

Harry S. Truman Library & Museum.

Attention media: Please make note of this item's accession number. Print out this page and retain it for your permissions records before downloading this image file for possible publication. Library staff cannot sign permissions forms or provide additional paperwork. The Library charges no usage fees for downloaded images.