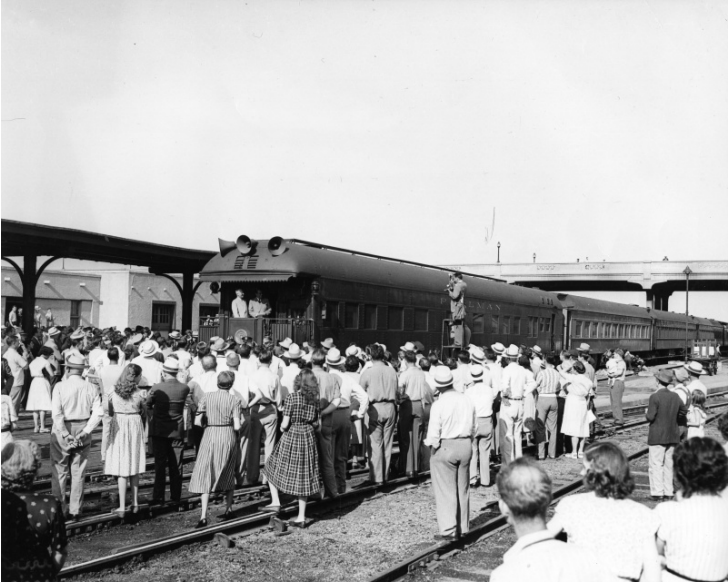


Truman and Gallegos on Train at Bolivar, Missouri



Description

President Harry S. Truman and President Romulo Gallegos of Venezuela standing on the rear platform of the presidential train, in the distance, with a crowd of people gathered around. The train is in the station at Bolivar, Missouri, where President Truman dedicated a statue to Simon Bolivar.

Date(s)

July 5, 1948

Accession Number 73-2730

8x10 inches (21x26 cm) Black & White

Keywords Crowds Presidential campaign, 1948 Presidential trips Presidents Railroad stations
Railroads Visitors, Foreign Visits of state

HST Keywords Missouri - Cities - Bolivar; Trains - Truman Aboard; Truman - Ceremonies - Dedications - Presidency;
Truman - Dignitaries %u2013 Foreign %u2013 Others; Truman - Trips - Missouri

People Pictured Gallegos, Romulo, 1884-1969 Truman, Harry S., 1884-1972

Rights Public Domain - This item is in the public domain and can be used freely without further permission.

Note: If you use this image, rights assessment and attribution are your responsibility.

Credit: Abbie Rowe National Park Service Harry S. Truman Library & Museum.

Attention media: Please make note of this item's accession number. Print out this page and retain it for your permissions records before downloading this image file for possible publication. Library staff cannot sign permissions forms or provide additional paperwork. The Library charges no usage fees for downloaded images.