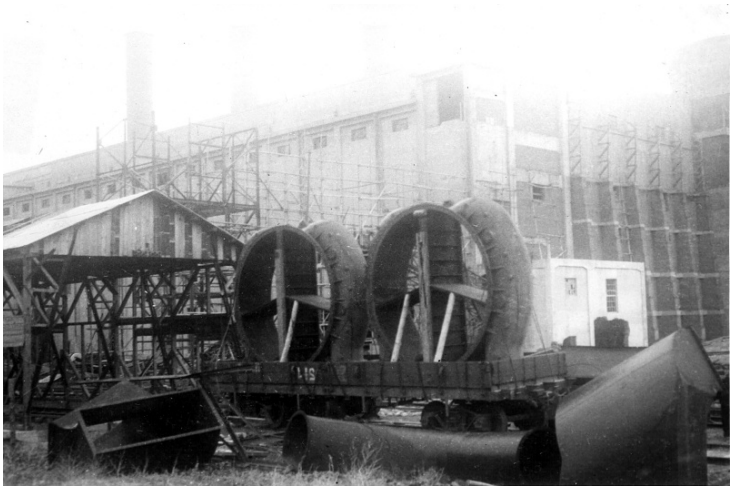


Power Plant at Fouhsin, Manchuria



Description

Exterior view of damage at power plant at Fouhsin, Manchuria. Heavy cast iron turbine parts have been loaded on a flat car in the powerhouse yard. These parts were probably left by Soviets during occupation because they would not clear a tunnel. They were very crudely loaded and could not have traveled far. The guys are strands of galvanized wire, not cables. Photograph taken during the U.S. Reparations Mission. Edwin Pauley was the U.S. Ambassador on the Allied Reparations Committee from 1945-47 (the committee that assessed the reparations the Axis powers could afford to pay the victors).

Date(s)

ca.

June 1946

Accession Number
2009-686

6.5x4.25 inches Black & White

Related Collection [Pauley, Edwin W. Papers](#)

Keywords Electric power-plants Reparations

HST Keywords China - Manchuria

Rights The Library is unaware of any copyright claims to this item; use at your own risk.

Note: If you use this image, rights assessment and attribution are your responsibility.

Harry S. Truman Library & Museum.

Attention media: Please make note of this item's accession number. Print out this page and retain it for your permissions records before downloading this image file for possible publication. Library staff cannot sign permissions forms or provide additional paperwork. The Library charges no usage fees for downloaded images.