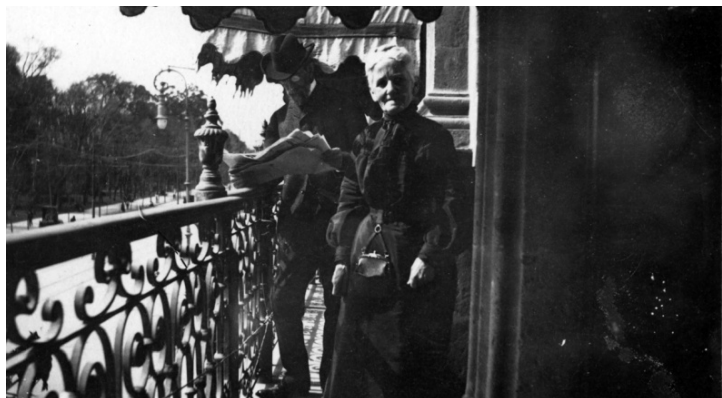


Elizabeth Emery Gates Standing on a Porch



Accession Number 2009-1865

Description

Elizabeth Emery Gates, grandmother of Bess Truman and mother of Madge Gates Wallace, is photographed on a porch with an elaborate wrought-iron railing. Behind her is an unidentified man reading a newspaper. Although the location is unknown, on the back of the photo is written "City of Mexico." Possibly taken during the family's trip to Colorado Springs. From: Truman Home.

Date(s)

ca.
1903

2.5x4 inches Black & White

Related Collection [Papers of Harry S. Truman Pertaining to Family, Business, and Personal Affairs](#)

Keywords Presidential family

HST Keywords Truman - Relatives - Gates Family - Gates, Elizabeth Emery

People Pictured Gates, Elizabeth Emery, 1841-1924

Rights The Library is unaware of any copyright claims to this item; use at your own risk.

Note: If you use this image, rights assessment and attribution are your responsibility.

Harry S. Truman Library & Museum.

Attention media: Please make note of this item's accession number. Print out this page and retain it for your permissions records before downloading this image file for possible publication. Library staff cannot sign permissions forms or provide additional paperwork. The Library charges no usage fees for downloaded images.