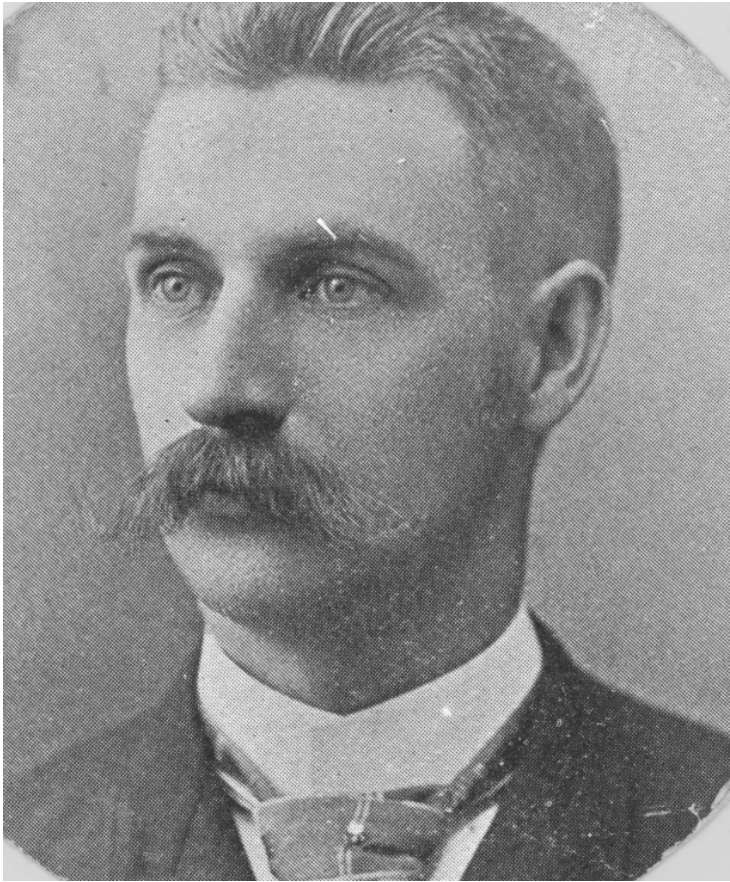


# Portrait of David W. Wallace



## Description

2-1/2" round portrait of a young David W. Wallace, Bess Truman's father. From: Truman home.

Date(s)

ca.

1880

Accession Number  
2009-1417

2-1/2 inch diameter    Black & White

Related Collection [Papers of Harry S. Truman Pertaining to Family, Business, and Personal Affairs](#)

Keywords    Portraits    Presidential family

HST Keywords Truman - Relatives - Wallace family - Wallace, D. W.

People Pictured Wallace, David Willock, 1860-1903

Rights Public Domain - This item is in the public domain and can be used freely without further permission.

**Note: If you use this image, rights assessment and attribution are your responsibility.**

Harry S. Truman Library & Museum.

Attention media: Please make note of this item's accession number. Print out this page and retain it for your permissions records before downloading this image file for possible publication. Library staff cannot sign permissions forms or provide additional paperwork. The Library charges no usage fees for downloaded images.