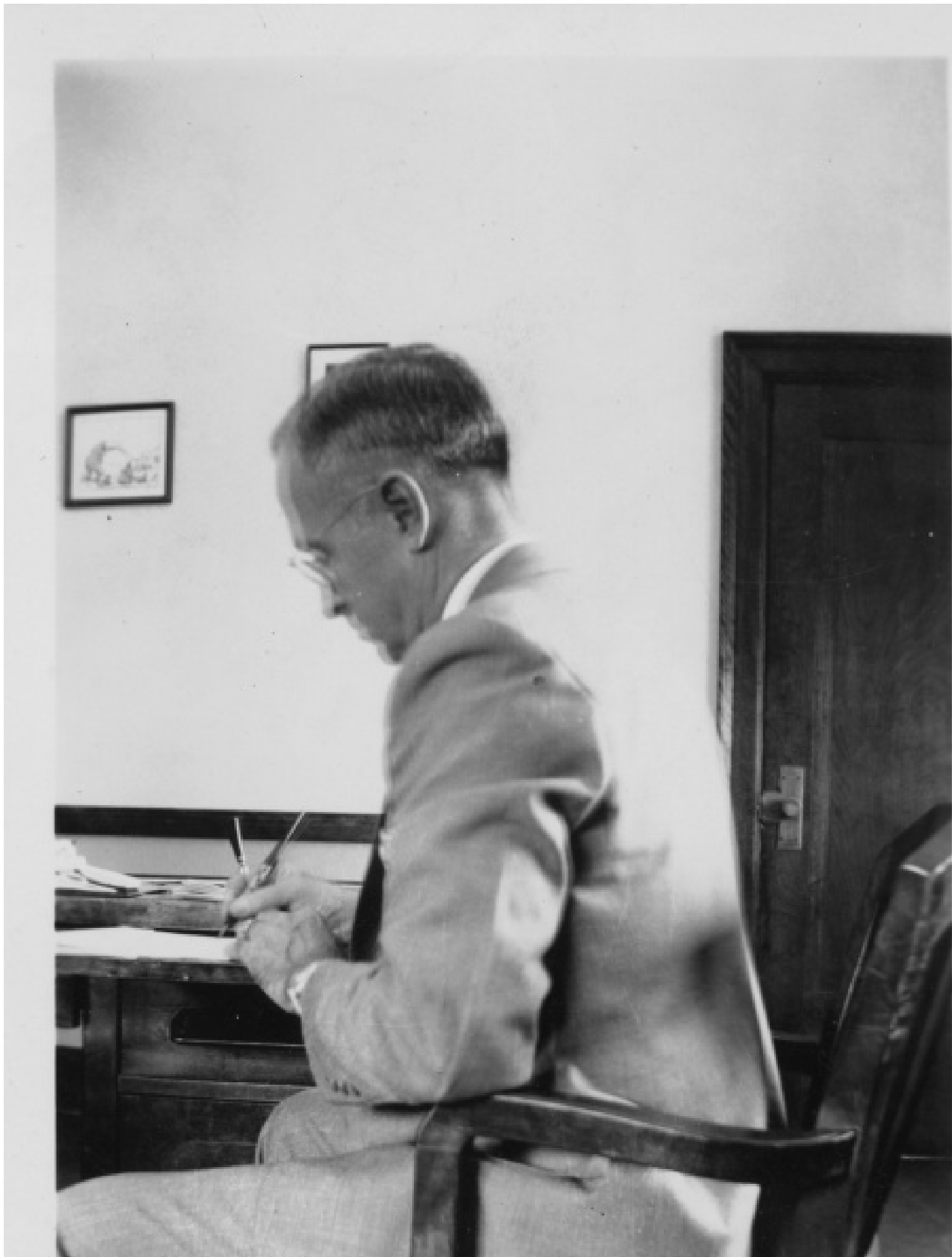


**Profile View of Senator Harry S. Truman at Desk at Jackson County Courthouse**



Accession Number

2008-324

**Description**

Profile view of Senator Harry S. Truman at his desk in the Jackson County Courthouse in Kansas City, Missouri.

Date(s)

1939

4.5x3 inches

Black & White

Keywords

Legislators

Offices

Portraits

HST Keywords

Truman - Portraits - Office - Desk - Jackson County Courthouse; Truman - Senator - First Term

People Pictured

Truman, Harry S., 1884-1972

Rights

The Library is unaware of any copyright claims to this item; use at your own risk.

**Note: If you use this image, rights assessment and attribution are your responsibility.**

Harry S. Truman Library & Museum.

Attention media: Please make note of this item's accession number. Print out this page and retain it for your permissions records before downloading this image file for possible publication. Library staff cannot sign permissions forms or provide additional paperwork. The Library charges no usage fees for downloaded images.