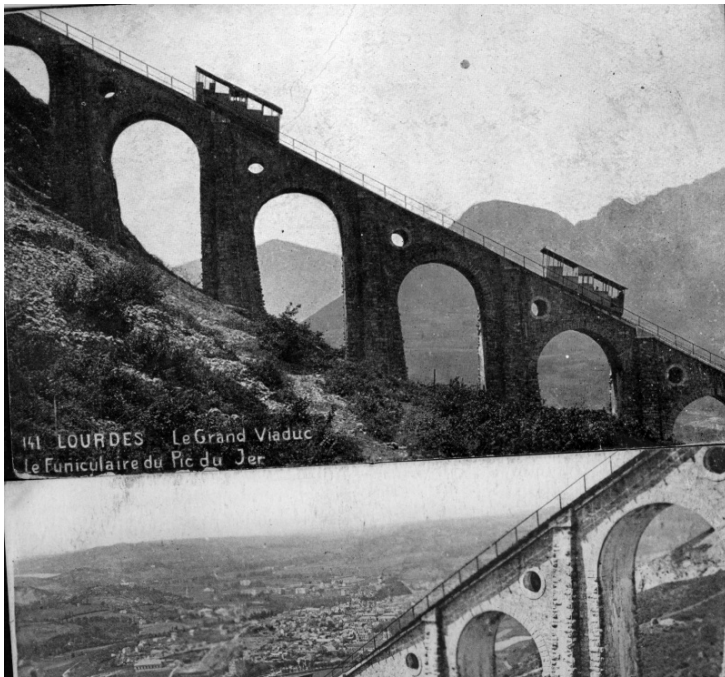


Lourdes after World War I



Description

Le Grand Viaduc le Funiculaire du Pic du Jer. Viaduct of a mountain railway at Lourdes, lying in the first Pyrenean foothills in southwestern France. Lourdes is the site of a Roman Catholic shrine. From an album of Lorain H. Cunningham. Mr. Cunningham served in the 129th Field Artillery during World War I and was a friend of Harry S. Truman.

Date(s)

March 27, 1919

Accession Number 2007-1261

3.5 x 5.5 inches Black & White

Related Collection [Cunningham, Lorain H. Papers](#)

Keywords Bridges Railroads Religions World War, 1914-1918 Shrines

HST Keywords France - Lourdes; World War I

Rights Public Domain - This item is in the public domain and can be used freely without further permission.

Note: If you use this image, rights assessment and attribution are your responsibility.

Harry S. Truman Library & Museum.

Attention media: Please make note of this item's accession number. Print out this page and retain it for your permissions records before downloading this image file for possible publication. Library staff cannot sign permissions forms or provide additional paperwork. The Library charges no usage fees for downloaded images.