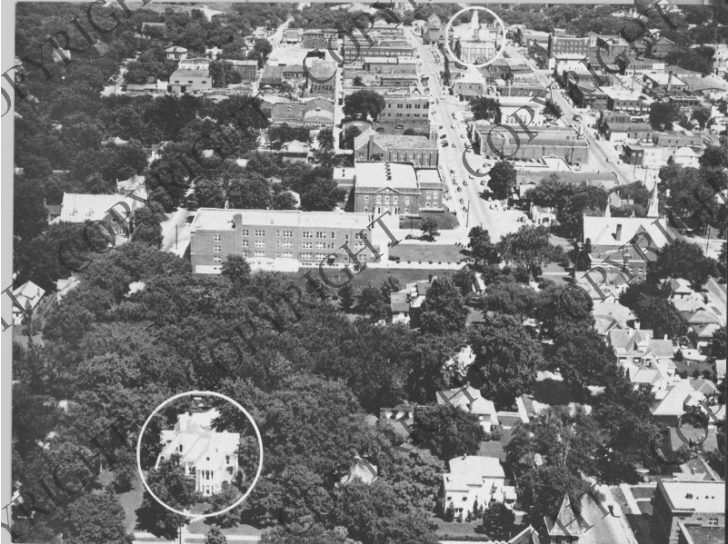


# Aerial View of President Truman's Home and The Jackson County Court House



## Description

One in a series of two color tinted post cards distributed for the Independence Chamber of Commerce. The small circles denote where the Jackson County Court House and the President's home are located. The Jackson County Court House is one of the two locations circled because President Truman started his career there. Donor unknown.

Date(s)

Accession Number  
96-852-01

8x10 inches (21x26 cm)    Black & White

Keywords    Aerial photographs    Courthouses    Presidential residences

HST Keywords    Courthouses - Jackson County - Independence, Missouri; Truman - Homes - Independence

Rights    Copyrighted - This item is copyrighted and cannot be published, reproduced, or otherwise used without the explicit permission of the copyright holder.

**Note: If you use this image, rights assessment and attribution are your responsibility.**

**Credit:** Lambert-Moon Printers and Stationers, Independence, MO    Harry S. Truman Library & Museum.

Attention media: Please make note of this item's accession number. Print out this page and retain it for your permissions records before downloading this image file for possible publication. Library staff cannot sign permissions forms or provide additional paperwork. The Library charges no usage fees for downloaded images.