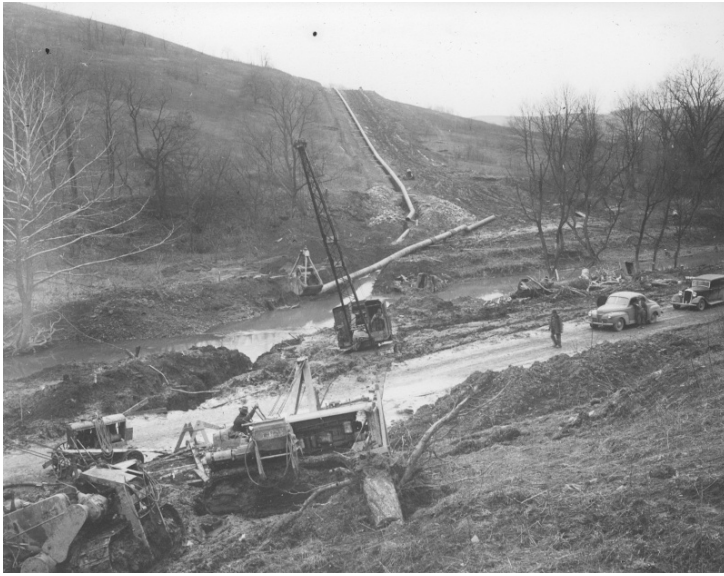


# Boom cat hauling clam shell out of mud



**Accession Number** 2008-453

9.25x7.5 inches    Black & White

**Related Collection** [Davies, Ralph K. Papers](#)

**Keywords** Oil industries    Pipelines

**HST Keywords** Pennsylvania; Wheeling Creek

**Rights** The Library is unaware of any copyright claims to this item; use at your own risk.

**Note: If you use this image, rights assessment and attribution are your responsibility.**

Harry S. Truman Library & Museum.

Attention media: Please make note of this item's accession number. Print out this page and retain it for your permissions records before downloading this image file for possible publication. Library staff cannot sign permissions forms or provide additional paperwork. The Library charges no usage fees for downloaded images.

## **Description**

Boom cat hauling clam shell out of mud in Western Pennsylvania on South Fork of Wheeling Creek. One track on the clam shell is completely under the mud and the other one is almost under the mud. From the Scrapbook War Emergency Pipelines, Inc.: Construction Views, Eastern Extension of East Texas-East Coast Pipeline Volume I.

## **Date(s)**

ca.  
1942