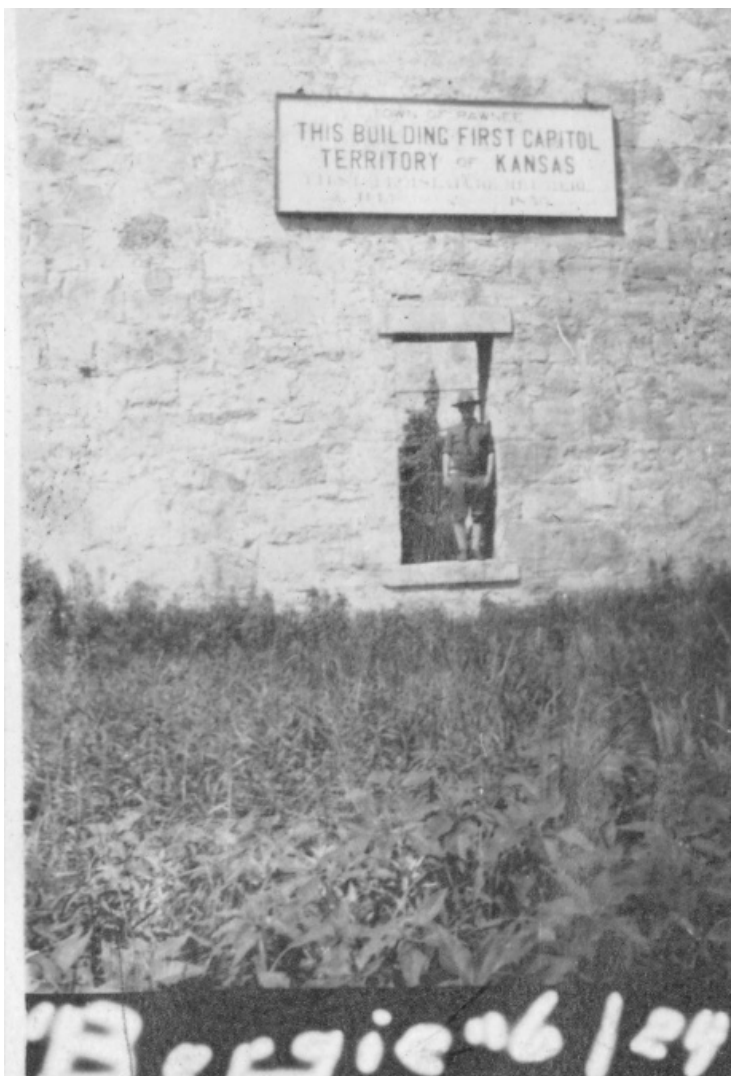


This Building First Capitol, Territory of Kansas



Description

A soldier stands in the door of a building with a sign that reads, "Town of Pawnee, This Building First Capitol, Territory of Kansas." From an album of Lorain H. Cunningham taken during training of 129th Field Artillery at Fort Riley, Kansas, during World War I.

Date(s)

1917

Accession Number
2007-760

1.5 x 2.5 inches Black & White

Related Collection [Cunningham, Lorain H. Papers](#)

Keywords Historic buildings Soldiers World War, 1914-1918

HST Keywords Kansas - Fort Riley; Kansas - LeCompton; World War I - General file

Rights Public Domain - This item is in the public domain and can be used freely without further permission.

Note: If you use this image, rights assessment and attribution are your responsibility.

Harry S. Truman Library & Museum.

Attention media: Please make note of this item's accession number. Print out this page and retain it for your permissions records before downloading this image file for possible publication. Library staff cannot sign permissions forms or provide additional paperwork. The Library charges no usage fees for downloaded images.