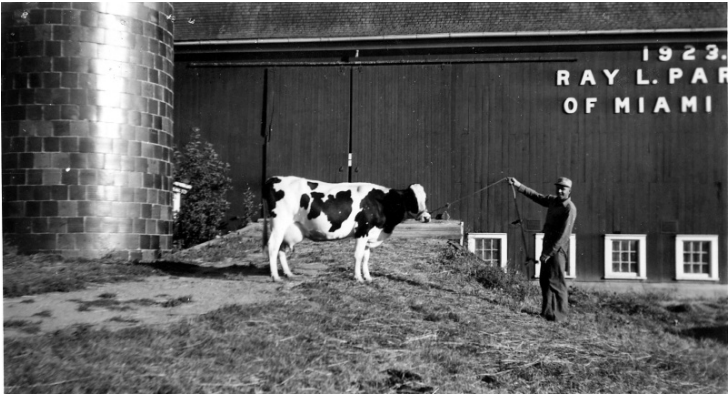


# Farm



**Accession Number** 61-159

3.5x5.5 inches      Black & White

**Related Collection** [White House Central Files: Official File](#)

**Keywords** Farms

**HST Keywords** New York - Clayton

**Rights** The Library is unaware of any copyright claims to this item; use at your own risk.

**Note: If you use this image, rights assessment and attribution are your responsibility.**

Harry S. Truman Library & Museum.

Attention media: Please make note of this item's accession number. Print out this page and retain it for your permissions records before downloading this image file for possible publication. Library staff cannot sign permissions forms or provide additional paperwork. The Library charges no usage fees for downloaded images.

**Description**

Picture of the Ray L. Parker Farm in Clayton, New York.

**Date(s)**

ca.

September 1946