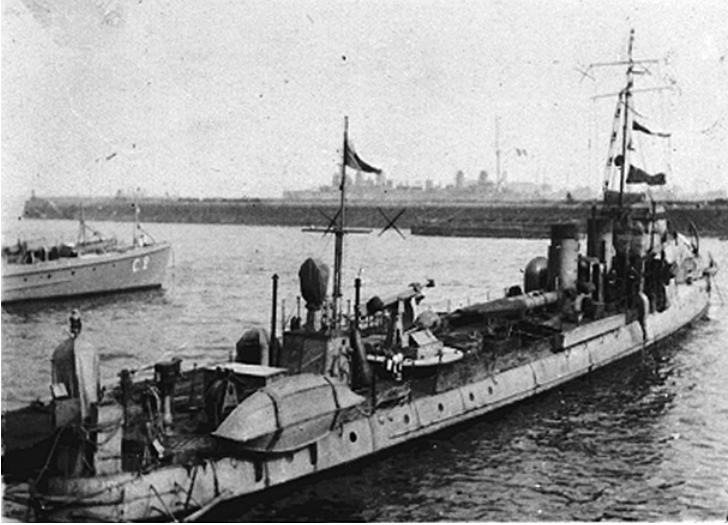


Ship at dock in France during World War I



Description

Ship at dock in France during World War I. From: Truman house, album of 35th Division clippings and snapshots.

Date(s)

March 1919

Accession Number 82-213-115

4x5 inches (10x13 cm) Black & White

Related Collection [Papers of Harry S. Truman Pertaining to Family, Business, and Personal Affairs](#)

Keywords Ships World War, 1914-1918

HST Keywords France - World War One - General; Thirty-fifth Division - General file; World War One - General File - Army life - Thirty-fifth Division

Rights Public Domain - This item is in the public domain and can be used freely without further permission.

Note: If you use this image, rights assessment and attribution are your responsibility.

Harry S. Truman Library & Museum.

Attention media: Please make note of this item's accession number. Print out this page and retain it for your permissions records before downloading this image file for possible publication. Library staff cannot sign permissions forms or provide additional paperwork. The Library charges no usage fees for downloaded images.