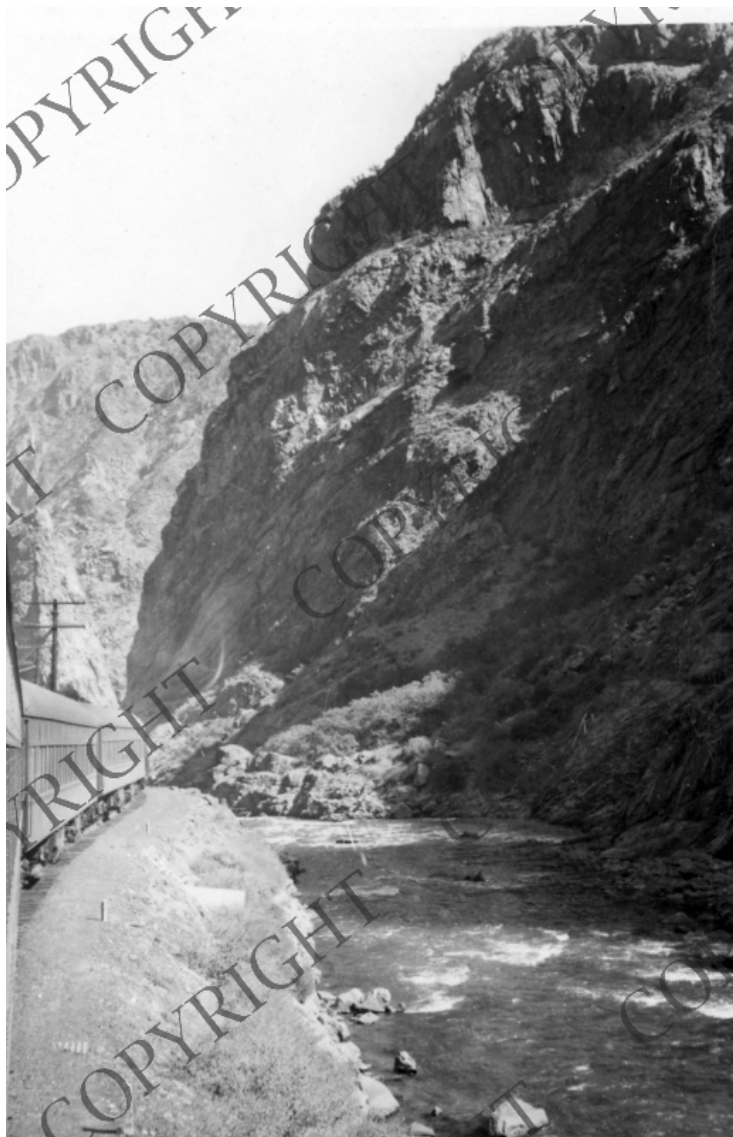


Snapshot of California Sierras



Description

Snapshot of the California Sierras, taken from a train when President Harry S. Truman was on a west coast whistlestop tour in September and October, 1952, to campaign for Adlai Stevenson and John Sparkman. From: Richard Cull, Jr.

Date(s)

October 1952

Accession Number 2002-457

3-1/2x5 inches Black & White

Keywords Mountains Presidential campaign, 1952 Railroads

HST Keywords California - Sierras; Truman - Campaigns - 1952 - California - Ref. to

Rights Copyrighted - This item is copyrighted and cannot be published, reproduced, or otherwise used without the explicit permission of the copyright holder.

Note: If you use this image, rights assessment and attribution are your responsibility.

Harry S. Truman Library & Museum.

Attention media: Please make note of this item's accession number. Print out this page and retain it for your permissions records before downloading this image file for possible publication. Library staff cannot sign permissions forms or provide additional paperwork. The Library charges no usage fees for downloaded images.