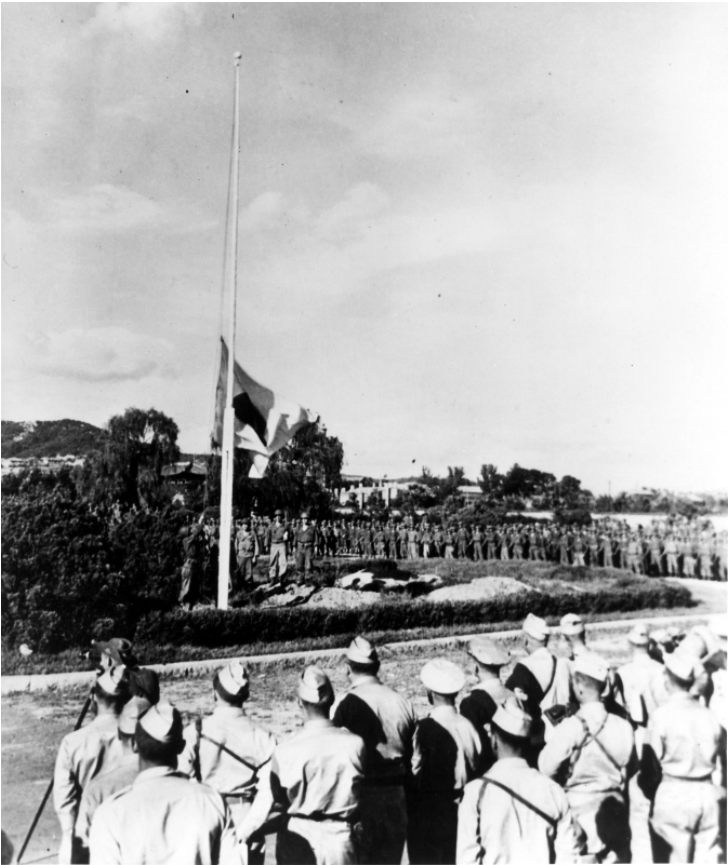


# The Japanese flag is hauled down at Seoul, Korea



## Description

The Japanese flag is hauled down at Seoul, Korea, as the rising sun sets in the far east...the end of Dai Nippon. From a scrapbook presented to Postmaster General Robert E. Hannegan on the occasion of his visit to General Headquarters, U. S. Army Forces, Pacific, in Tokyo, Japan, July 1946. (These photographs are also reproduced in 8x10 and placed in the regular photo boxes).

## Date(s)

September 9, 1945

Accession Number 98-2441

8x10 inches (21x26 cm) Black & White

**Keywords** Flags World War, 1939-1945

**HST Keywords** Japan - Surrender; Korea - South Korea - Seoul

**Rights** The Library is unaware of any copyright claims to this item; use at your own risk.

**Note: If you use this image, rights assessment and attribution are your responsibility.**

Harry S. Truman Library & Museum.

Attention media: Please make note of this item's accession number. Print out this page and retain it for your permissions records before downloading this image file for possible publication. Library staff cannot sign permissions forms or provide additional paperwork. The Library charges no usage fees for downloaded images.