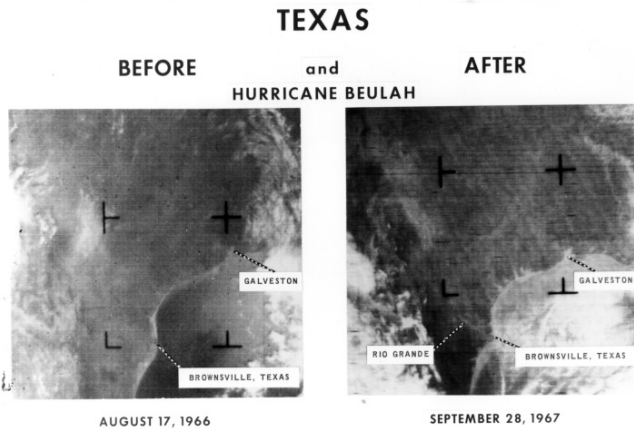


Rio Grande River in Texas taken by satellite Nimbus II



THE NASA SATELLITE, NIMBUS II, PHOTOGRAPHS THE FLOODED RIO GRANDE RIVER SEVERAL DAYS AFTER THE PASSAGE OF HURRICANE BEULAH OVER THIS AREA. THE EARLIER APT PICTURE IS REPRESENTATIVE OF THE NORMAL SITUATION WHEN THE RELATIVELY NARROW AND DRY RIO GRANDE RIVER CANNOT BE DETECTED BY THE APT CAMERA. THE DELINEATION BY THE APT CAMERA OF THE FLOODED RIO GRANDE AND SEVERAL COASTAL BAYS FROM GALVESTON TO BROWNSVILLE HAS BEEN AIDED CONSIDERABLY BY THE REFLECTION OF SUNLIGHT FROM THESE WATERS.

Description

The Rio Grande River in Texas taken by Nimbus II during Hurricane Beulah. Nimbus II is a NASA satellite.

Date(s)

September 28, 1967

Accession Number 98-429

8x10 inches (21x26 cm) Black & White

Related Collection [Webb, James E. Papers](#)

Keywords Hurricanes

HST Keywords Texas

Rights Public Domain - This item is in the public domain and can be used freely without further permission.

Note: If you use this image, rights assessment and attribution are your responsibility.

Credit: National Aeronautics and Space Administration Harry S. Truman Library & Museum.

Attention media: Please make note of this item's accession number. Print out this page and retain it for your permissions records before downloading this image file for possible publication. Library staff cannot sign permissions forms or provide additional paperwork. The Library charges no usage fees for downloaded images.