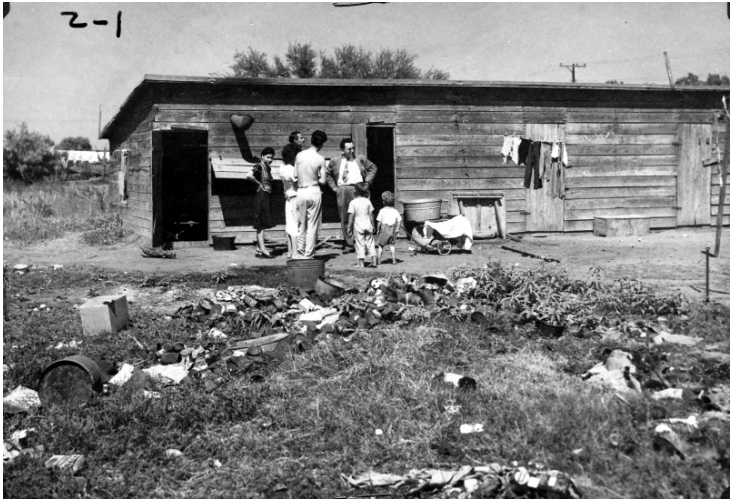


General view of Mathis, Texas labor camp



Description

General view of the labor camp in Mathis, Texas. Garbage is scattered all over the grounds. There are no playgrounds for the children, as well as no ventilation, lighting, floors, or sanitary facilities in the buildings. All people in this photo are unidentified. This photo was sent to President Harry S. Truman by Hector Garcia of the League of United Latin American Citizens.

Date(s)

May 1948

Accession Number
60-210-39

5x7 inches (13x18 cm) Black & White

Related Collection [White House Central Files: Official File](#)

Keywords Dwellings Labor camps Sanitation

HST Keywords Texas, Mathis

Rights The Library is unaware of any copyright claims to this item; use at your own risk.

Note: If you use this image, rights assessment and attribution are your responsibility.

Harry S. Truman Library & Museum.

Attention media: Please make note of this item's accession number. Print out this page and retain it for your permissions records before downloading this image file for possible publication. Library staff cannot sign permissions forms or provide additional paperwork. The Library charges no usage fees for downloaded images.