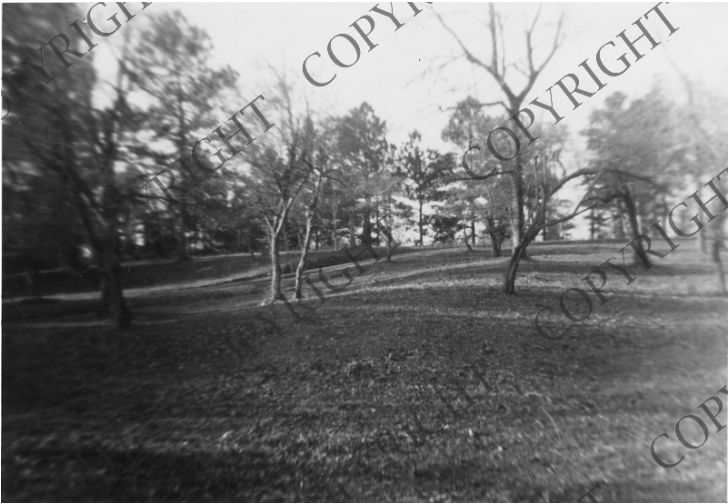


General View of Los Adais, Historical Park



Description

Los Adais near Robeline, Natchitoches Parish, Louisiana. General view of historical park. First Provincial Capital of Texas.

Established by the Spanish, abandoned in 1773. Sent to President Harry S. Truman by John D. O'Halloran.

Date(s)

January 29, 1952

Accession Number
60-195-01

3x4.5 inches Black & White

Related Collection [White House Central Files: Official File](#)

Keywords Historic sites Parks

HST Keywords Louisiana, Robeline, Natchitoches Parish; Los Adais Historical Park

Rights Copyrighted - This item is copyrighted and cannot be published, reproduced, or otherwise used without the explicit permission of the copyright holder.

Note: If you use this image, rights assessment and attribution are your responsibility.

Credit: John D. O'Halloran Harry S. Truman Library & Museum.

Attention media: Please make note of this item's accession number. Print out this page and retain it for your permissions records before downloading this image file for possible publication. Library staff cannot sign permissions forms or provide additional paperwork. The Library charges no usage fees for downloaded images.