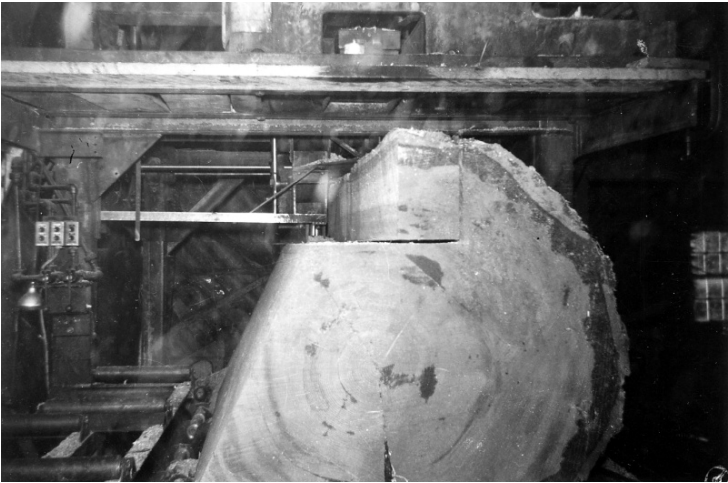


# Lumber mill operation, Oregon



## Description

Snapshot of a Verti-Kut woods mill in Oregon, showing two saws at right angles clearing off the top of a log.

## Date(s)

ca.  
1950

Accession Number 2004-145

5x3 inches Black & White

Related Collection [Goldy, Daniel L. Papers](#)

Keywords Lumber trade

HST Keywords Factory; Oregon - Clatsop County; Verti-Kut Mill

Rights The Library is unaware of any copyright claims to this item; use at your own risk.

Note: If you use this image, rights assessment and attribution are your responsibility.

Harry S. Truman Library & Museum.

Attention media: Please make note of this item's accession number. Print out this page and retain it for your permissions records before downloading this image file for possible publication. Library staff cannot sign permissions forms or provide additional paperwork. The Library charges no usage fees for downloaded images.