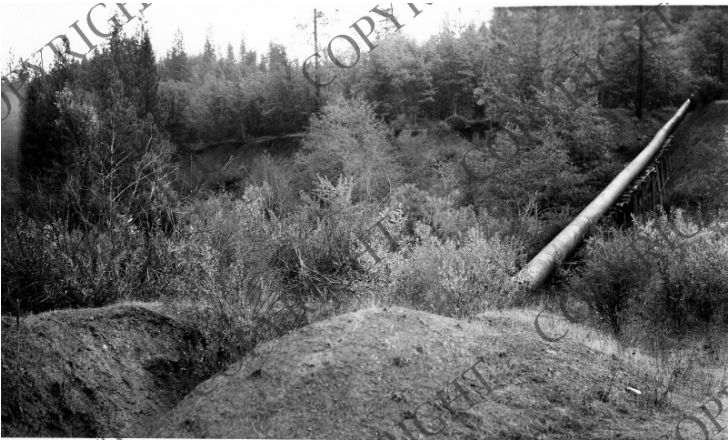


# Part of mining operation in forest



## Description

Snapshot of a large metal pipe on an incline. From a series of photos of forested areas in the mountains of the Pacific Northwest relating to forest management and mining.

## Date(s)

ca.  
1950

**Accession Number** 2004-116

3x5 inches    Black & White

**Related Collection** [Goldy, Daniel L. Papers](#)

**Keywords** Mineral industries    Forests and forestry

**HST Keywords** Forest Service

**Rights** Copyrighted - This item is copyrighted and cannot be published, reproduced, or otherwise used without the explicit permission of the copyright holder.

**Note: If you use this image, rights assessment and attribution are your responsibility.**

Harry S. Truman Library & Museum.

Attention media: Please make note of this item's accession number. Print out this page and retain it for your permissions records before downloading this image file for possible publication. Library staff cannot sign permissions forms or provide additional paperwork. The Library charges no usage fees for downloaded images.