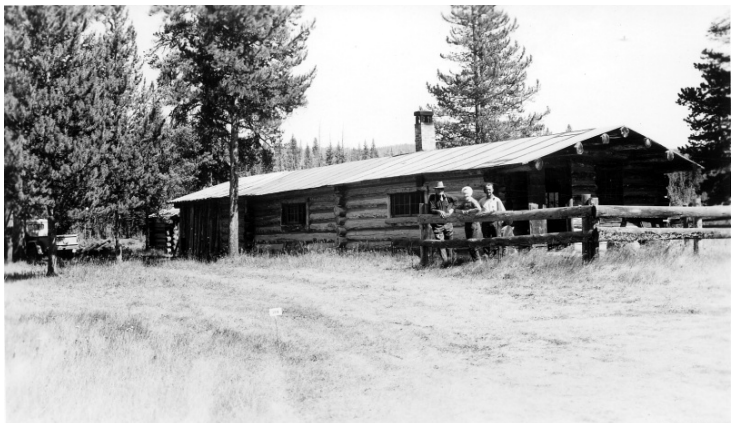


Log cabin with people in forest



Description

Log cabin with three people standing outside leaning against a rail fence. A marker "194" is in the foreground. From a series of photos of forested areas in the mountains of the Pacific Northwest relating to forest management and mining.

Date(s)

ca.
1950

Accession Number 2004-111

3x5 inches Black & White

Related Collection [Goldy, Daniel L. Papers](#)

Keywords Dwellings Forests and forestry

HST Keywords Forest Service

Rights The Library is unaware of any copyright claims to this item; use at your own risk.

Note: If you use this image, rights assessment and attribution are your responsibility.

Harry S. Truman Library & Museum.

Attention media: Please make note of this item's accession number. Print out this page and retain it for your permissions records before downloading this image file for possible publication. Library staff cannot sign permissions forms or provide additional paperwork. The Library charges no usage fees for downloaded images.