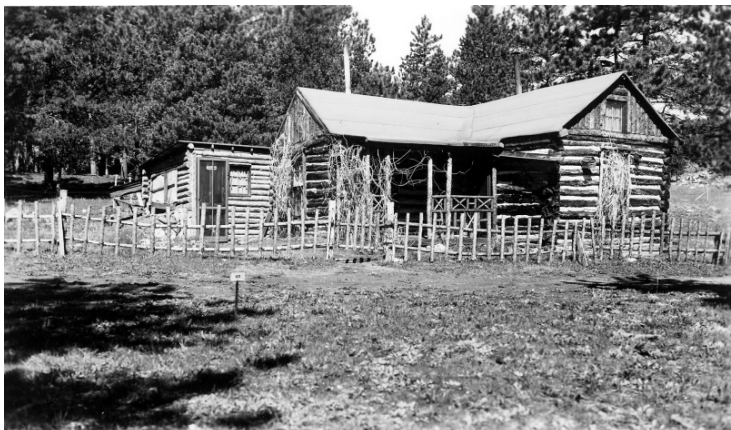


# Log cabin in forest



**Accession Number** 2004-102

3x5 inches    Black & White

**Related Collection** [Goldy, Daniel L. Papers](#)

**Keywords** Dwellings    Forests and forestry

**HST Keywords** Forest Service

**Rights** The Library is unaware of any copyright claims to this item; use at your own risk.

**Note: If you use this image, rights assessment and attribution are your responsibility.**

Harry S. Truman Library & Museum.

Attention media: Please make note of this item's accession number. Print out this page and retain it for your permissions records before downloading this image file for possible publication. Library staff cannot sign permissions forms or provide additional paperwork. The Library charges no usage fees for downloaded images.

## **Description**

Log cabin in a forest with a marker "65" in the front yard. From a series of photos of forested areas in the Pacific Northwest relating to forest management and mining.

## **Date(s)**

ca.  
1950