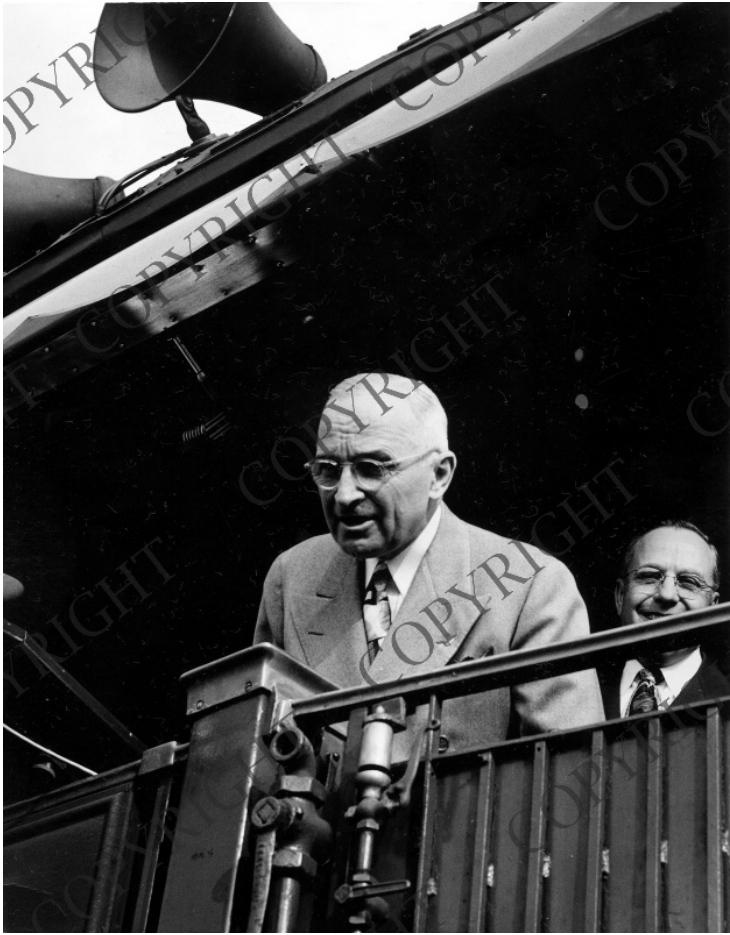


Truman on whistlestop in California



Description

President Harry S. Truman campaigns from the back of a train at a whistlestop in Burbank, California. The man in the background is unidentified. From: Robert Godwin.

Date(s)

September 23, 1948

Accession Number

2004-5

8x10 inches (21x26 cm) Black & White

Keywords Presidential campaign trips Presidential campaign, 1948 Presidents Railroads

HST Keywords California - Burbank; Trains - Truman - 1948; Truman - Campaigns - Presidential - 1948 - California - Burbank

People Pictured Truman, Harry S., 1884-1972

Rights Copyrighted - This item is copyrighted and cannot be published, reproduced, or otherwise used without the explicit permission of the copyright holder.

Note: If you use this image, rights assessment and attribution are your responsibility.

Credit: Robert F. Godwin, Jr. Harry S. Truman Library & Museum.

Attention media: Please make note of this item's accession number. Print out this page and retain it for your permissions records before downloading this image file for possible publication. Library staff cannot sign permissions forms or provide additional paperwork. The Library charges no usage fees for downloaded images.