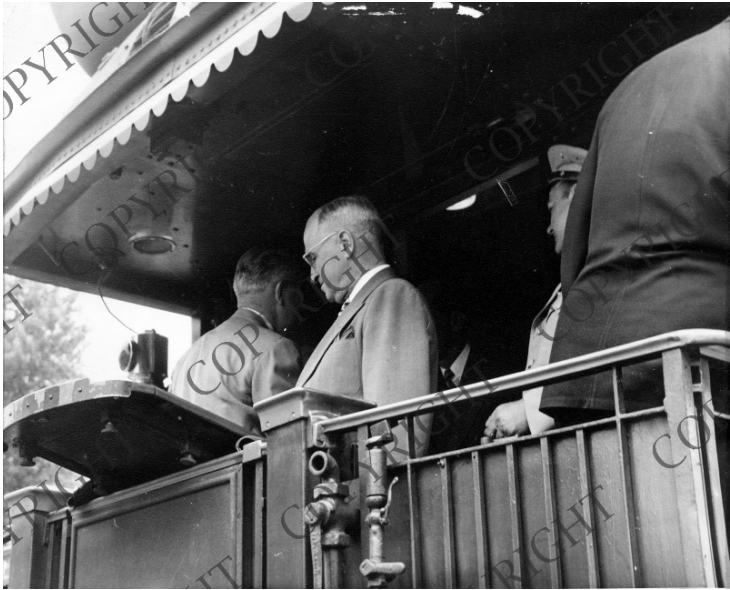


# Truman on the back of a train in Sedalia, MO



## Description

President Harry S. Truman (second from left) stands on the back of the Presidential Train at a stop in Sedalia, Missouri, June 1948. All other men are unidentified. The man in the hat on the right (party obscured) is General Wallace Graham. Donor: Sam Highlyman, Sedalia Lodge No. 125, Benevolent and Protective Order of Elks, Sedalia, Missouri.

## Date(s)

June 17, 1948

**Accession Number** 59-1527-07

8x10 inches (21x26 cm)    Black & White

**Keywords** Generals    Presidential advisors    Presidential campaign, 1948    Presidents    Railroads

**HST Keywords** Truman - Campaigns - Presidential - 1948 - Missouri; Trains - Truman Aboard; Missouri - Cities - Sedalia

**People Pictured** Graham, Wallace Harry, 1910-1996    Truman, Harry S., 1884-1972

**Rights** Copyrighted - This item is copyrighted and cannot be published, reproduced, or otherwise used without the explicit permission of the copyright holder.

**Note: If you use this image, rights assessment and attribution are your responsibility.**

**Credit:** Sam Highlyman    Harry S. Truman Library & Museum.

Attention media: Please make note of this item's accession number. Print out this page and retain it for your permissions records before downloading this image file for possible publication. Library staff cannot sign permissions forms or provide additional paperwork. The Library charges no usage fees for downloaded images.