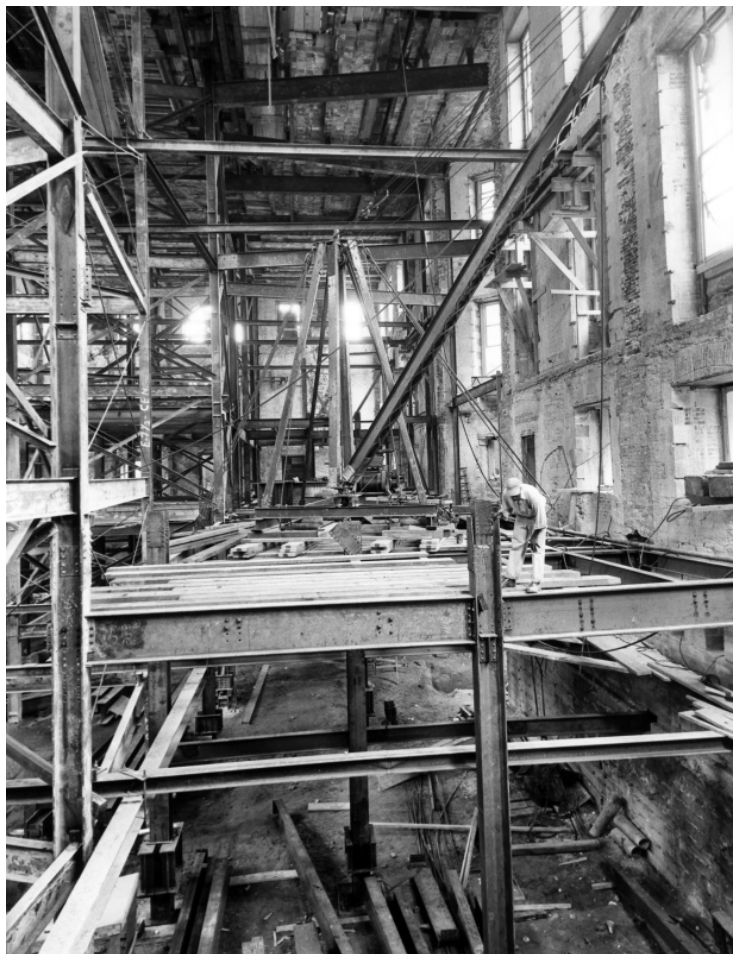


View from the window of Room G-15 during White House renovation



Description

View from the window of Room G-15 looking east along the south wall of the White House during renovation. The permanent steel columns and cross beams have been erected in this area to the level of the ground floor.

Date(s)

July 26, 1950

Accession Number 71-346

8x10 inches (21x26 cm) Black & White

Related Collection [Harry S. Truman Papers](#)

Keywords Building repair and reconstruction Dwellings Historic buildings Presidential residences Renovation (Architecture)

HST Keywords White House - Miscellaneous - Renovation

Rights Public Domain - This item is in the public domain and can be used freely without further permission.

Note: If you use this image, rights assessment and attribution are your responsibility.

Credit: Abbie Rowe National Park Service Harry S. Truman Library & Museum.

Attention media: Please make note of this item's accession number. Print out this page and retain it for your permissions records before downloading this image file for possible publication. Library staff cannot sign permissions forms or provide additional paperwork. The Library charges no usage fees for downloaded images.