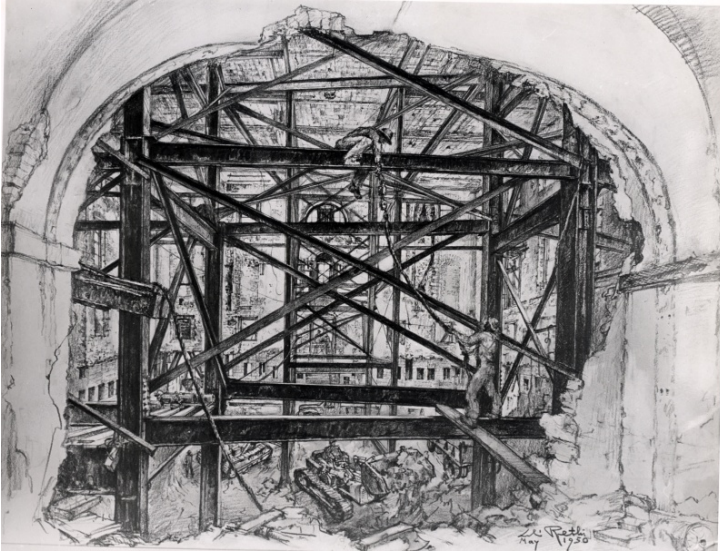


# Sketch of main corridor of White House during the renovation



## Description

Sketch from main corridor, west of Lobby, to the east end of the White House, showing excavation work below basement and interior steel supporting columns. This was made during the White House renovation.

## Date(s)

June 1, 1950

**Accession Number** 71-322

8x10 inches (21x26 cm)      Black & White

**Related Collection** [Harry S. Truman Papers](#)

**Keywords** Building repair and reconstruction      Dwellings      Historic buildings      Presidential residences  
Renovation (Architecture)

**HST Keywords** White House - Miscellaneous - Renovation

**Rights** Public Domain - This item is in the public domain and can be used freely without further permission.

**Note: If you use this image, rights assessment and attribution are your responsibility.**

**Credit:** Abbie Rowe      National Park Service      Harry S. Truman Library & Museum.

Attention media: Please make note of this item's accession number. Print out this page and retain it for your permissions records before downloading this image file for possible publication. Library staff cannot sign permissions forms or provide additional paperwork. The Library charges no usage fees for downloaded images.