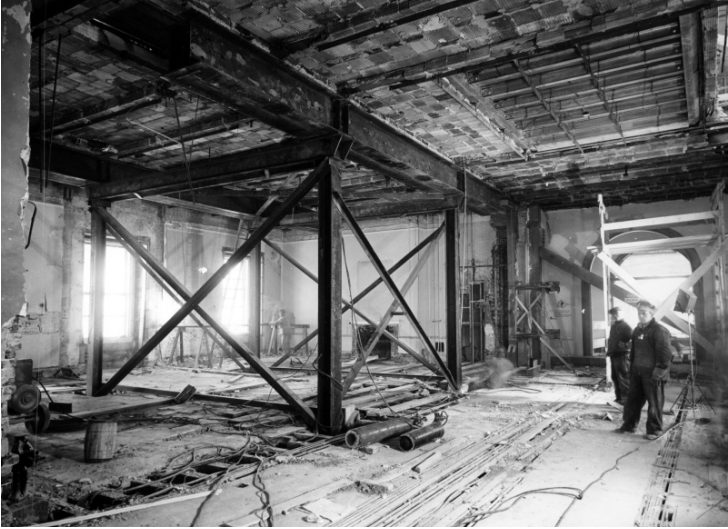


Northeast View from 2nd Floor Corridor, White House During Renovation



Description

Northeast view from 2nd Floor Corridor to Room 14, North Hall and Room 15. The four temporary steel shoring columns have been installed from concrete foundation 30 feet below grade to support the large 40 foot horizontal beams below the 3rd Floor level.

Date(s)

March 9, 1950

Accession Number

71-222

8x10 inches (21x26 cm) Black & White

Related Collection [Harry S. Truman Papers](#)

Keywords Dwellings Historic sites Presidential residences Renovation (Architecture)

HST Keywords White House - Miscellaneous - Renovation

Rights Public Domain - This item is in the public domain and can be used freely without further permission.

Note: If you use this image, rights assessment and attribution are your responsibility.

Credit: Abbie Rowe National Park Service Harry S. Truman Library & Museum.

Attention media: Please make note of this item's accession number. Print out this page and retain it for your permissions records before downloading this image file for possible publication. Library staff cannot sign permissions forms or provide additional paperwork. The Library charges no usage fees for downloaded images.