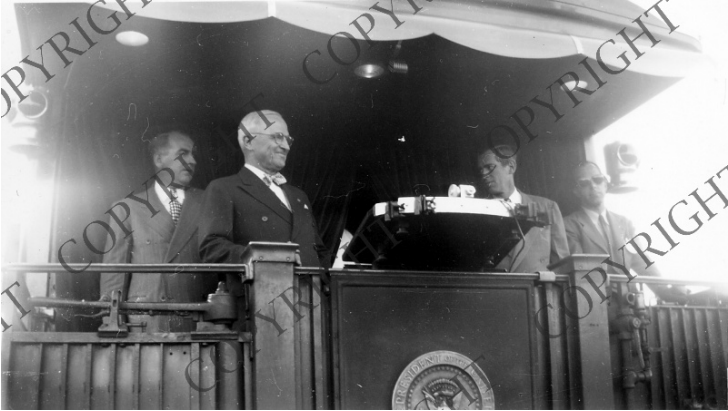


Truman on rear platform of train at whistlestop in Sacramento, California



Description

From the rear platform of a train, President Harry S. Truman (second from the left) surveys the crowd gathered to meet him at a whistlestop in Sacramento, California, during a campaign tour. Harold T. Johnson, Mayor of Roseville, California, is on Truman's right. The other men are unidentified. From: Carol Paoli, Plumas County, Museum, 500 Jackson St., Quincy, CA 95971

Date(s)

September 22, 1948

Accession Number 2006-163

2.5x4.25 inches Black & White

Keywords Mayors Presidential campaign trips Presidential campaign, 1948 Presidents Railroads

HST Keywords California - Sacramento - Truman - Campaigns - 1948; Trains - Truman Aboard - 1948 - California - Sacramento; Truman - Campaigns - 1948 - California - Sacramento; Truman - Dignitaries - Mayors - Roseville, California

People Pictured Johnson, Harold Terry, 1907-1988 Truman, Harry S., 1884-1972

Rights Copyrighted - This item is copyrighted and cannot be published, reproduced, or otherwise used without the explicit permission of the copyright holder.

Note: If you use this image, rights assessment and attribution are your responsibility.

Credit: Henry Magill Harry S. Truman Library & Museum.

Attention media: Please make note of this item's accession number. Print out this page and retain it for your permissions records before downloading this image file for possible publication. Library staff cannot sign permissions forms or provide additional paperwork. The Library charges no usage fees for downloaded images.