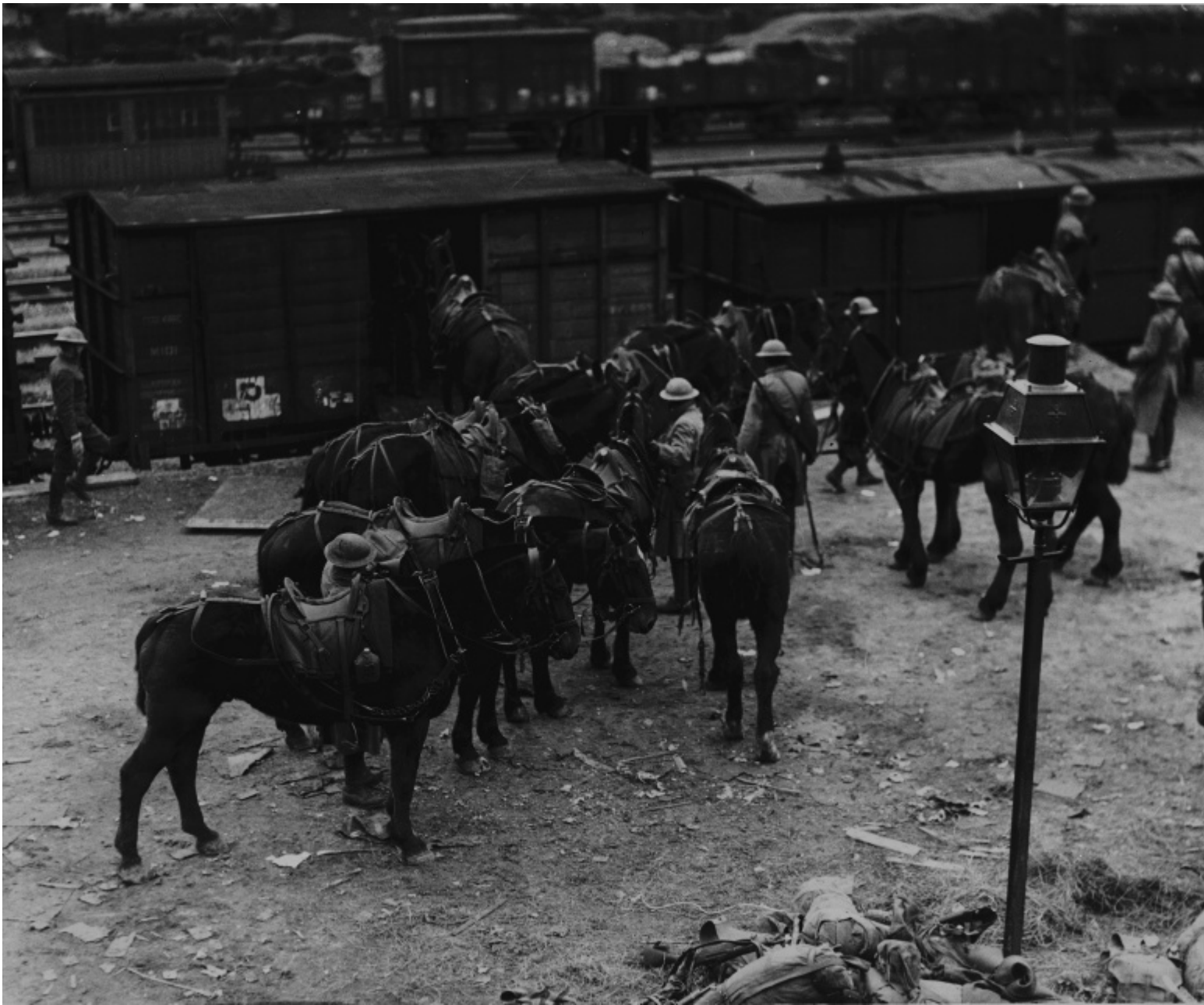


Loading horses on box cars during World War I



Accession Number

65-3968

Description

Loading horses on box cars during World War I. Donor: Frank Freidel, who obtained these photographs from the National Archives.

Date(s)

March 7, 1918

4x5 inches (10x13 cm)

Black & White

Keywords

Horses

Soldiers

World War, 1914-1918

HST Keywords

Animals - Horses; France - Freidel, Frank - World War I collection - Equipment - Supplies; World War I - General File

Rights

The Library is unaware of any copyright claims to this item; use at your own risk.

Note: If you use this image, rights assessment and attribution are your responsibility.

Harry S. Truman Library & Museum.

Attention media: Please make note of this item's accession number. Print out this page and retain it for your permissions records before downloading this image file for possible publication. Library staff cannot sign permissions forms or provide additional paperwork. The Library charges no usage fees for downloaded images.