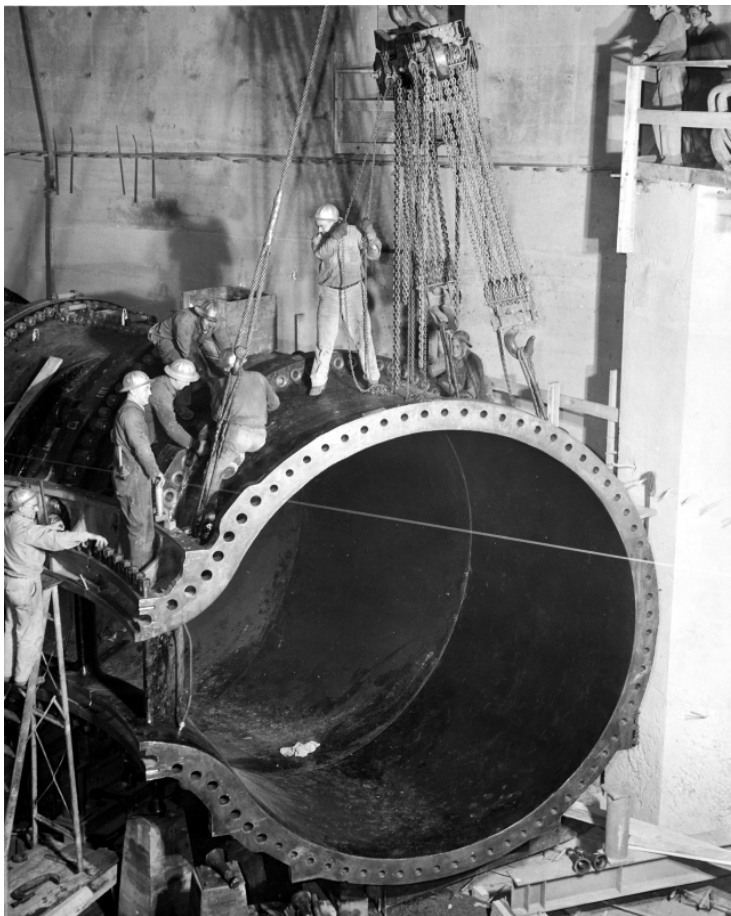


Scroll Case at Grand Coulee Dam



Description

Assembling scroll case for generating unit L-7, the first postwar unit to be installed in the West Powerhouse of the Grand Coulee Dam. This scroll case carries water to a giant turbine.

Date(s)

ca.
1946

Accession Number 97-924

8x10 inches (21x26 cm) Black & White

Related Collection [Webb, James E. Papers](#)

Keywords Dams

HST Keywords Dams - Grand Coulee Dam

Rights Public Domain - This item is in the public domain and can be used freely without further permission.

Note: If you use this image, rights assessment and attribution are your responsibility.

Credit: Bureau of Reclamation Harry S. Truman Library & Museum.

Attention media: Please make note of this item's accession number. Print out this page and retain it for your permissions records before downloading this image file for possible publication. Library staff cannot sign permissions forms or provide additional paperwork. The Library charges no usage fees for downloaded images.