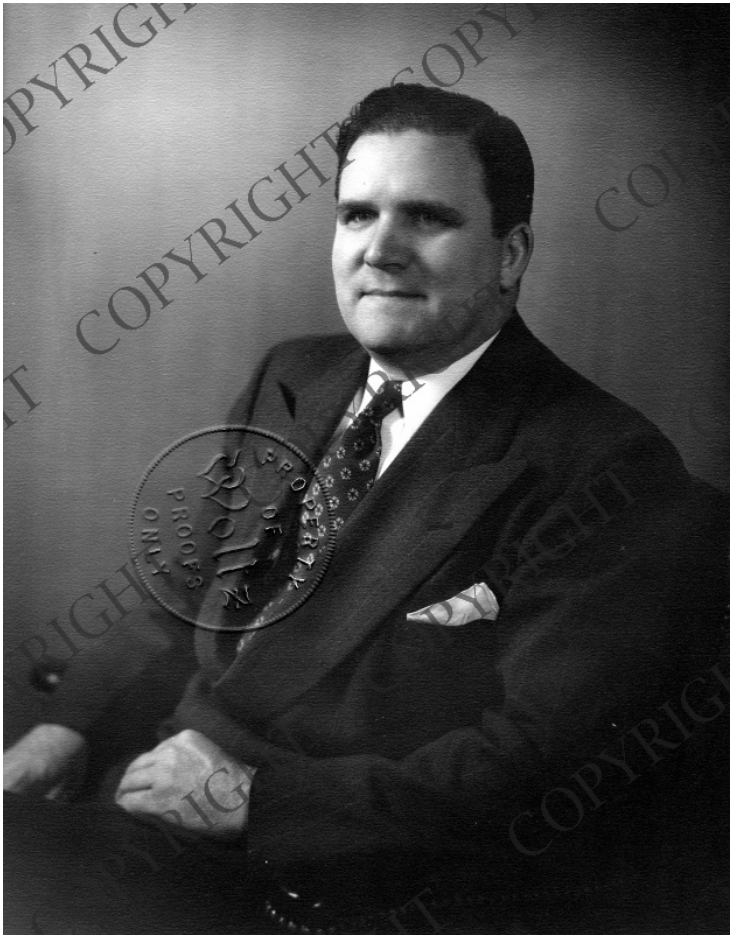


# Proof portrait of James Webb



## Description

Proof portrait of James E. Webb, Under Secretary of State.

## Date(s)

1951

**Accession Number** 97-184

8x10 inches (21x26 cm)    Black & White

**Related Collection** [Webb, James E. Papers](#)

**Keywords** Civil service

**People Pictured** Webb, James E. (James Edwin), 1906-1992

**Rights** Copyrighted - This item is copyrighted and cannot be published, reproduced, or otherwise used without the explicit permission of the copyright holder.

**Note: If you use this image, rights assessment and attribution are your responsibility.**

**Credit:** Woltz Studio, Washington (D.C .)    Harry S. Truman Library & Museum.

Attention media: Please make note of this item's accession number. Print out this page and retain it for your permissions records before downloading this image file for possible publication. Library staff cannot sign permissions forms or provide additional paperwork. The Library charges no usage fees for downloaded images.