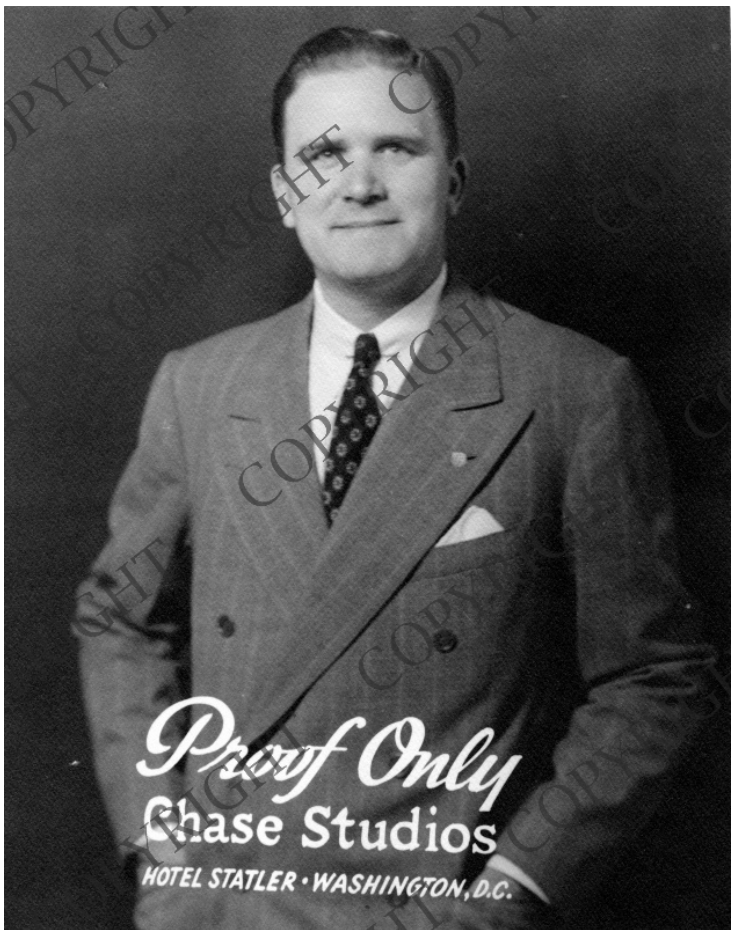


Proof portrait of James E. Webb



Description

Proof from the Chase-Statler Studio of James E. Webb, Director of the Budget.

Date(s)

1946

Accession Number

97-172

8x10 inches (21x26 cm) Black & White

Related Collection [Webb, James E. Papers](#)

Keywords Civil service

People Pictured Webb, James E. (James Edwin), 1906-1992

Rights Copyrighted - This item is copyrighted and cannot be published, reproduced, or otherwise used without the explicit permission of the copyright holder.

Note: If you use this image, rights assessment and attribution are your responsibility.

Credit: Chase Studios Harry S. Truman Library & Museum.

Attention media: Please make note of this item's accession number. Print out this page and retain it for your permissions records before downloading this image file for possible publication. Library staff cannot sign permissions forms or provide additional paperwork. The Library charges no usage fees for downloaded images.