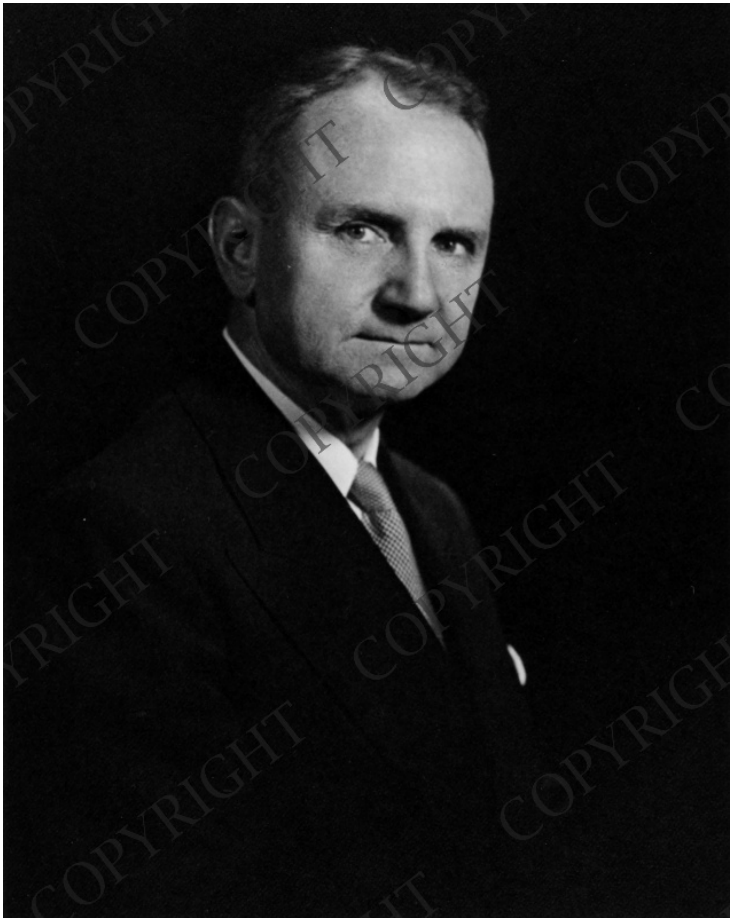


Portrait of Richmond B. Keech



Description

Portrait of Richmond B. Keech, Administrative Assistant to the President; Judge of U.S. District Court for the District of Columbia. Original photograph oversized.

Date(s)

ca.
1946

Accession Number 59-114

4.5x6 inches Black & White

Keywords Presidential advisors Judges District courts

People Pictured Keech, Richmond Bowling, 1896-1986

Rights Copyrighted - This item is copyrighted and cannot be published, reproduced, or otherwise used without the explicit permission of the copyright holder.

Note: If you use this image, rights assessment and attribution are your responsibility.

Credit: Maurice Constant Harry S. Truman Library & Museum.

Attention media: Please make note of this item's accession number. Print out this page and retain it for your permissions records before downloading this image file for possible publication. Library staff cannot sign permissions forms or provide additional paperwork. The Library charges no usage fees for downloaded images.