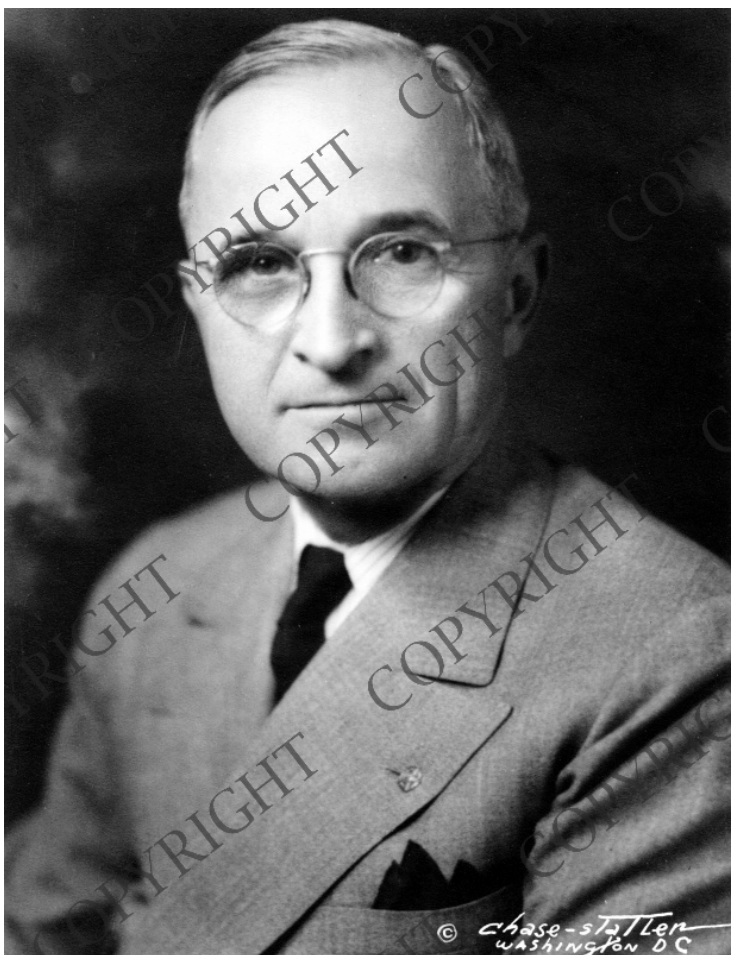


Head and Shoulders Portrait of President Truman



Description

Portrait of President Harry S. Truman.

Date(s)

ca.
1945

Accession Number 58-630

11x9.25 inches Black & White

Keywords Presidents

HST Keywords Truman - Portraits - Chase Statler

People Pictured Truman, Harry S., 1884-1972

Rights Copyrighted - This item is copyrighted and cannot be published, reproduced, or otherwise used without the explicit permission of the copyright holder.

Note: If you use this image, rights assessment and attribution are your responsibility.

Credit: Chase Studios Harry S. Truman Library & Museum.

Attention media: Please make note of this item's accession number. Print out this page and retain it for your permissions records before downloading this image file for possible publication. Library staff cannot sign permissions forms or provide additional paperwork. The Library charges no usage fees for downloaded images.