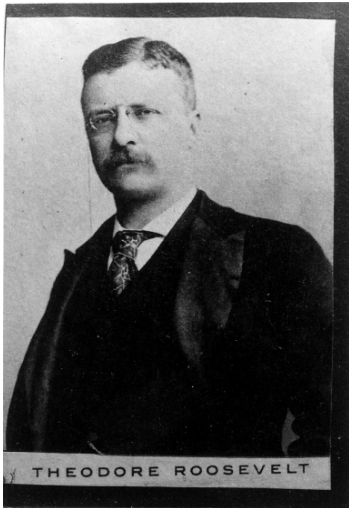


# President and Mrs. Theodore Roosevelt



## Description

President Theodore Roosevelt and Mrs. Edith Roosevelt. Donor:  
Orbra E. King

## Date(s)

**Accession Number** 58-484-26

3.5x5 inches    Black & White

**Keywords** First ladies    Portraits    Presidents

**HST Keywords** Postcards; Roosevelt, Mrs. Theodore (Edith)

**People Pictured** Roosevelt, Edith Kermit Carow, 1861-1948    Roosevelt, Theodore, 1858-1919

**Rights** The Library is unaware of any copyright claims to this item; use at your own risk.

**Note: If you use this image, rights assessment and attribution are your responsibility.**

Harry S. Truman Library & Museum.

Attention media: Please make note of this item's accession number. Print out this page and retain it for your permissions records before downloading this image file for possible publication. Library staff cannot sign permissions forms or provide additional paperwork. The Library charges no usage fees for downloaded images.