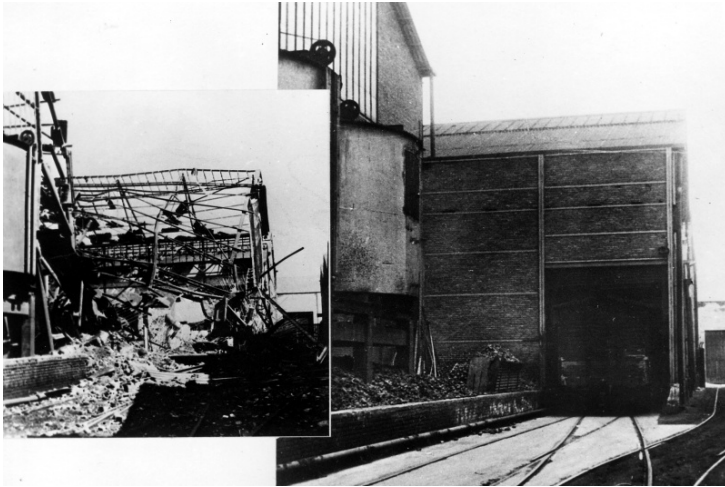


# Belgian metal works before and after Marshall Plan



## Description

Before and after photo of a Belgian metal works under the Marshall Plan. This photograph is also in the album "The Marshall Plan at Mid Mark" (64-1213 and 1214).

## Date(s)

ca.  
1947

Accession Number 58-328

5x7 inches (13x18 cm) Black & White

**Keywords** International relief Reconstruction (1939-1951)

**HST Keywords** Belgium - Belgian metal works; Marshall Plan

**Rights** The Library is unaware of any copyright claims to this item; use at your own risk.

**Note: If you use this image, rights assessment and attribution are your responsibility.**

Harry S. Truman Library & Museum.

Attention media: Please make note of this item's accession number. Print out this page and retain it for your permissions records before downloading this image file for possible publication. Library staff cannot sign permissions forms or provide additional paperwork. The Library charges no usage fees for downloaded images.