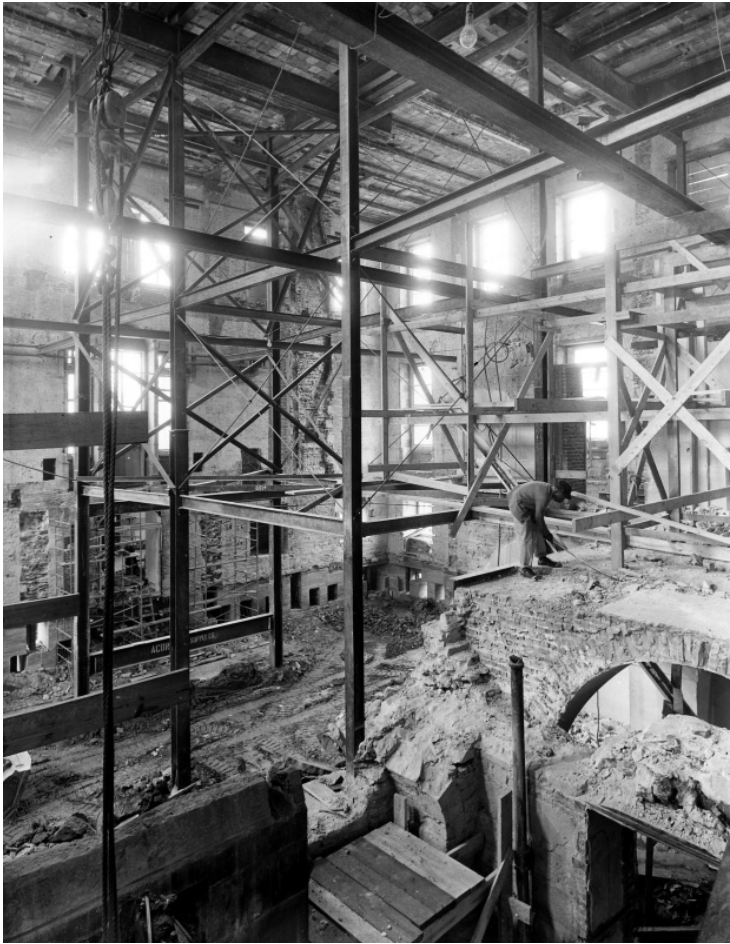


White House Excavation Below Basement in Eastern Part of Building



Description

Southeast view from the Lobby showing progress in removing the interior walls and excavation below basement in eastern part of the building.

Date(s)

May 2, 1950

Accession Number
71-290

8x10 inches (21x26 cm) Black & White

Related Collection [Harry S. Truman Papers](#)

Keywords Building repair and reconstruction Dwellings Presidential residences

HST Keywords White House - Miscellaneous - Renovation

Rights Public Domain - This item is in the public domain and can be used freely without further permission.

Note: If you use this image, rights assessment and attribution are your responsibility.

Credit: Abbie Rowe National Park Service Harry S. Truman Library & Museum.

Attention media: Please make note of this item's accession number. Print out this page and retain it for your permissions records before downloading this image file for possible publication. Library staff cannot sign permissions forms or provide additional paperwork. The Library charges no usage fees for downloaded images.