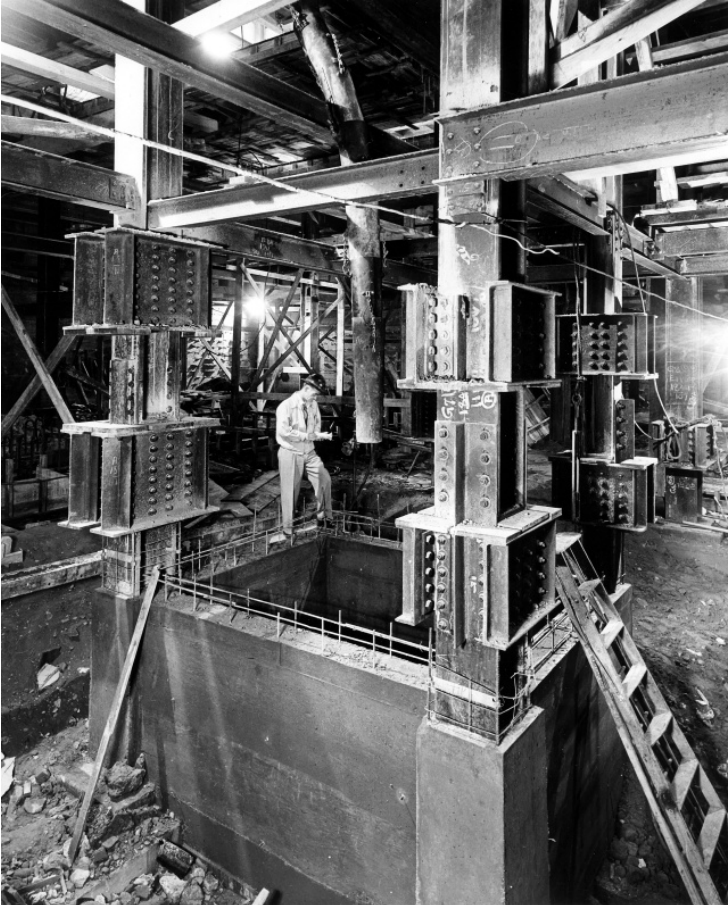


# Elevator Well in Sub-Basement during White House renovation



## Description

Dwarfed by the massive steel beams and supporting structures, a worker inspects the new elevator well in the sub-basement of the White House.

## Date(s)

October 25, 1950

**Accession Number** 71-383

8x10 inches (21x26 cm)    Black & White

**Related Collection** [Harry S. Truman Papers](#)

**Keywords** Building repair and reconstruction    Dwellings    Presidential residences

**HST Keywords** White House - Miscellaneous - Renovation

**Rights** Public Domain - This item is in the public domain and can be used freely without further permission.

**Note: If you use this image, rights assessment and attribution are your responsibility.**

**Credit:** Abbie Rowe    National Park Service    Harry S. Truman Library & Museum.

Attention media: Please make note of this item's accession number. Print out this page and retain it for your permissions records before downloading this image file for possible publication. Library staff cannot sign permissions forms or provide additional paperwork. The Library charges no usage fees for downloaded images.